

| Pos.      | Benennung  | Art.-Nr.                    | Stück je Schema |         |            |            |   |   |   |  |
|-----------|--|-----------------------------|-----------------|---------|------------|------------|---|---|---|--|
|           |  |                             | A               | C       | D          | G          | K |   |   |  |
| 1         |  |                             |                 |         |            |            |   |   |   |  |
| 2         | Laufschuh  | vorn ls                     | 6-32544         | 1       | 1          | 1          | 1 | 1 | 1 | 1  |
|           |  | hinten rs                   | 6-29559         | 1       | 1          | 1          | 1 | 1 | 1 |  |
| 3         | Steuerteil   | 6-33329                     | 1               | 2       | 1          | 1          | 2 |   |   |  |
| 4         | Fixierstift nur bei Schema D                           | 9-39897                     | -               | -       | 1          | -          | - | - | - |  |
| 5         | Eckumlenkung   | 6-32021                     | 2               | 4       | 2          | 2          | 4 |   |   |  |
| 6         | Schere G.U-90 oZ                                       | 6-32302                     | 2               | 4       | 2          | 2          | 4 |   |   |  |
| 7         | Abdeckkappe Schere G.U-90 oZ                           | 9-42435                     | 2               | 4       | 2          | 2          | 4 |   |   |  |
| 8         | Scherengleiter   | 6-22755                     | 2               | 4       | 2          | 2          | 4 |   |   |  |
| 9         | Rast-Eckumlenkung                                      | 6-32918                     | 1               | 2       | 1          | 1          | 2 |   |   |  |
| 10        |  | 6-32919                     | 1               | 2       | 1          | 1          | 2 |   |   |  |
| 12        | Drehgriff Dirigent F (f. Fenster)                      | 6-28072-99                  | 1               | 2       | 1          | 1          | 2 |   |   |  |
| 12B       | Drehgriff Dirigent F abziehbar                         | 8-00694                     | -               | -       | -          | -          | - | - | - |  |
| 12C       | Deckrosette für Drehflügel                             | 6-24913                     | 1               | 2       | 1          | 2          | - | - | - |  |
| 17        | Abdeckkappe 1 Paar (L/R)                               | 9-38542-L/R                 | 2               | 4       | 2          | 2          | 4 |   |   |  |
| 18        | Federpuffer  | 6-29565                     | 1               | 2       | 1          | 1          | 2 |   |   |  |
| 19        | Halter   | 9-38522                     | 1               | 2       | 1          | 1          | 2 |   |   |  |
| 20        | Mittelstück senkrecht                                  | FFH                         | Länge           | MV      |            |            |   |   |   |  |
|           |  | 700-850                     | 530             | 1       | 6-32494-30 |            |   |   |   |  |
|           |  | 851-1100                    | 780             | 1       | 6-32494-40 |            |   |   |   |  |
|           |  | 1101-1350                   | 1030            | 2       | 6-32494-50 |            |   |   |   |  |
|           |  | 1351-1600                   | 1280            | 2       | 6-32494-60 | 1          | 2 | 1 | 2 |  |
|           |  | 1601-1850                   | 1530            | 3       | 6-32494-70 |            |   |   |   |  |
| 1851-2100 | 1780   | 3                           | 6-32494-80      |         |            |            |   |   |   |  |
| 2101-2350 | 2030   | 4                           | 6-32494-90      |         |            |            |   |   |   |  |
| 20A       | Getriebe variabel                                      | FFH                         | Länge           | MV      | Griffsitz  |            |   |   |   |  |
|           |  | 700-750                     | 430             | -       | 295-375    | G-22081    |   |   |   |  |
|           |  | 751-850                     | 880             | 1       | 375-600    | G-22082    |   |   |   |  |
|           |  | 851-1100                    | 940             | 1       | 400        | G-22124    |   |   |   |  |
|           |  | 1101-1350                   | 1190            | 2       | 500        | G-22125    | 1 | 2 | 1 | 2  |
|           |  | 1351-1600                   | 1440            | 2       | 600        | G-22127    |   |   |   |  |
| 1601-1850 | 1690   | 3                           | 600             | G-22128 |            |            |   |   |   |  |
| 1851-2100 | 1940   | 3                           | 980             | G-22133 |            |            |   |   |   |  |
| 2101-2350 | 2190   | 4                           | 980             | G-22134 |            |            |   |   |   |  |
| 21        | Mittelstück waagrecht oben FFB 640-1600                | FFH                         | Länge           | MV      |            |            |   |   |   |  |
|           |  | 640-700                     | 415             | -       | -          | 6-26741    |   |   |   |  |
|           |  | 701-850                     | 530             | 1       | -          | 6-32494-30 |   |   |   |  |
|           |  | 851-1100                    | 780             | 1       | -          | 6-32494-40 |   |   |   |  |
|           |  | 1101-1350                   | 1030            | 2       | -          | 6-32494-50 |   |   |   |  |
|           |  | 1351-1600                   | 1280            | 2       | -          | 6-32494-60 | 1 | 2 | 1 | 2  |
| *         | Mittelstück waagrecht unten FFB 640-1600               | FFH                         | Länge           | MV      |            |            |   |   |   |  |
|           |  | 640-700                     | 415             | -       | -          | 6-26741    |   |   |   |  |
|           |  | 701-850                     | 415             | -       | -          | 6-26741    |   |   |   |  |
|           |  | 851-1100                    | 530             | 1       | -          | 6-32494-35 |   |   |   |  |
|           |  | 1101-1350                   | 780             | 1       | -          | 6-32494-40 |   |   |   |  |
|           |  | 1351-1600                   | 1030            | 1       | -          | 6-32494-50 | 1 | 2 | 1 | 2  |
| 25        | Stange Ø8  | FFH                         | Länge           |         |            |            |   |   |   |  |
|           |  | 640-850                     | 600             |         | 9-25476-06 |            |   |   |   |  |
|           |  | 851-1100                    | 850             |         | 9-25476-09 |            |   |   |   |  |
|           |  | 1101-1350                   | 1100            |         | 9-25476-11 |            |   |   |   |  |
| 1351-1600 | 1350   |                             | 9-25476-14      |         |            |            |   |   |   |  |
| 25A       | Stange Ø8 ab FFB 1200 für Pos. 25B (Längen wie Pos.25) | 9-25476-99                  | 1               | 2       | 1          | 1          | 2 |   |   |  |
| 25B       | Drucksteuerung ab FFB 1200 (Koppelteile, 3 Stück)      | K-16784                     | 1               | 2       | 1          | 1          | 2 |   |   |  |
| 26        | Stützbock ab FFB 1200                                  | 6-24764                     | 1               | 2       | 1          | 1          | 2 |   |   |  |
| 27        | Abdeckschiene unten P 1607                             | FFH                         | Länge           |         |            |            |   |   |   |  |
|           |  | 640-850                     | 1035            |         | 9-38803-11 |            |   |   |   |  |
|           |  | 851-1100                    | 1115            |         | 9-38803-12 |            |   |   |   |  |
|           |  | 1101-1350                   | 1535            |         | 9-38803-16 |            |   |   |   |  |
| 1351-1600 | 1615   |                             | 9-38803-17      |         |            |            |   |   |   |  |
| 28        | Laufschiene P 1300                                     | (Anwendungsbereich s. Bl.3) | 9-31483-99      | 1       | 2          | 1          | 1 | 2 |   |  |
| 29        | Führungsschiene P 1225                                 | Längen wie Pos. 28          | 9-30140-99      | 1       | 2          | 1          | 1 | 2 |   |  |
| 30        | Abdeckschiene P 1226                                   | Längen wie Pos. 28          | 9-30141-99      | 1       | 2          | 1          | 1 | 2 |   |  |
| 31        | Abdeckkappe für Führungsschiene                        |                             | 9-30142         |         |            |            |   |   | 2 |  |
| 32        | Schließplatten   | für Eurofalz 18x8           |                 |         | 9-42301-18 |            |   |   |   | Anzahl der Schließplatten ist abhängig von der Flügelgröße |
|           |  | für Eurofalz 20x8           |                 |         | 9-42301-20 |            |   |   |   |  |
|           |  | für Eurofalz 24x8           |                 |         | 9-42654    |            |   |   |   |  |
|           |  | für Euronut 7/8x4           |                 |         | 9-42620    |            |   |   |   |  |
| 34        | Rastplatte   | für Eurofalz 18x8           |                 |         | 9-43636-18 |            |   |   |   |  |
|           |  | für Eurofalz 20x8           |                 |         | 9-43636-20 |            |   |   |   |  |
|           |  | für Eurofalz 24x8           |                 |         | 9-43636-24 |            |   |   |   |  |
|           |  | für Euronut 7/8x4           |                 |         | 9-30430    |            |   |   |   |  |

**Anwendungsbereich:**

FFB 640-1600  
FFH 700-2350  
Flügelgewicht max. 130 kg

**Bestellangaben:**

RAB (Rahmenaußenbreite)  
FFB (Flügelaußenbreite)  
FFH (Flügelalzhöhe)  
Anschlag ls oder rs (ls gez.)  
Farbe: EV1,UC3,UC5 oder weiß  
Schema

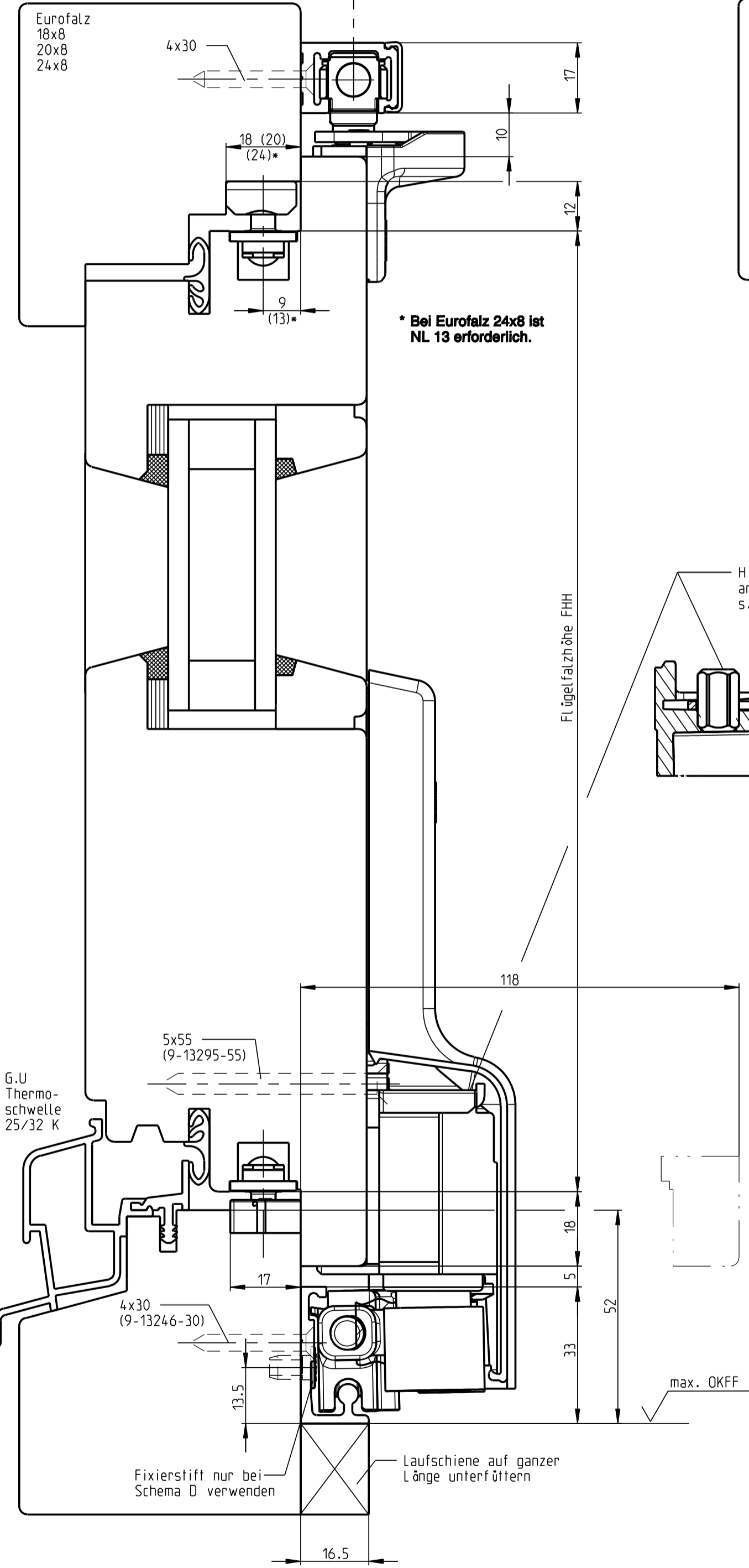
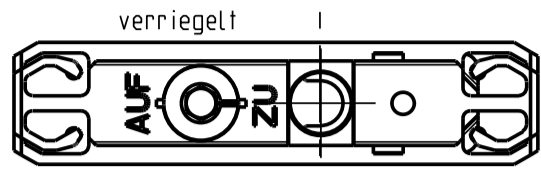
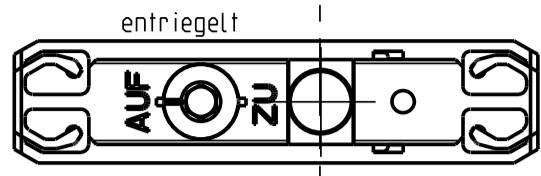
Die Flügelhöhe darf die 2 1/2-fache Flügelbreite nicht überschreiten

| Pos. | Benennung   | Alternativ                            |                       | Art.-Nr.   | Stück |   |
|------|---|---------------------------------------|-----------------------|------------|-------|---|
|      |   | FFH                                   | RS                    |            |       |   |
| 41   | Getriebe abschließbar Größe = Dornmaß 25/30/35/40/45/50       | 951-1450                              | G-22330-99            | -          | 1     |   |
|      |   | 1451-1950                             | G-22331-99            | -          | 1     |   |
|      |   | 1951-2350                             | G-22332-99            | -          | 1     |   |
|      |   | 951-1450                              | G-22344-99            | -          | -     |   |
| 46   | Getriebe nicht abschließbar Größe = Dornmaß 25/30/35/40/45/50 | 951-1450                              | G-22345-99            | 1          | -     |   |
|      |   | 1451-1950                             | G-22346-99            | -          | -     |   |
|      |   | 1951-2350                             | G-22346-99            | -          | -     |   |
|      |   | 951-1450                              | G-22346-99            | -          | -     |   |
| 46   | Drehgriff Dirigent F (ohne Stift)                             | FD 56-70: Länge = 118                 | 6-28072-00            | -          | -     |   |
| 47   | Drehgriff Dirigent F (außen)                                  | FD 71-80: Länge = 131                 | 9-26874-56            | -          | -     |   |
| 48   | PZ-Rosette innen  | M5x60: FD 51-60                       | 6-25223               | -          | -     |   |
| 48   | PZ-Rosette außen  | M5x70: FD 61-70                       | 6-25224-02            | -          | 1     |   |
| 49   | PZ-Rosette außen  | M5x80: FD 71-80                       | 9-32407-02            | -          | 1     |   |
| 50   | Vierkantstift   | FD 56-70: Länge = 118                 | 9-26874-56            | -          | -     |   |
| 51   | Senkschraube  | Bei Ötigung innen, nicht abschließbar | FD 71-80: Länge = 131 | 9-26874-69 | -     | 1 |
|      |   | Bei Ötigung innen, abschließbar       | M5x60: FD 51-60       | -60        | -     | - |
|      |   | Bei Ötigung beidseitig, abschließbar  | M5x70: FD 61-70       | 9-13255-70 | -     | - |
|      |   |                                       | M5x80: FD 71-80       | -80        | -     | 4 |

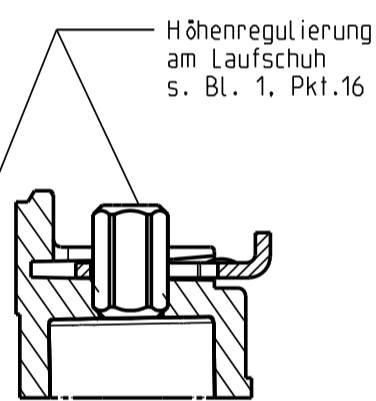
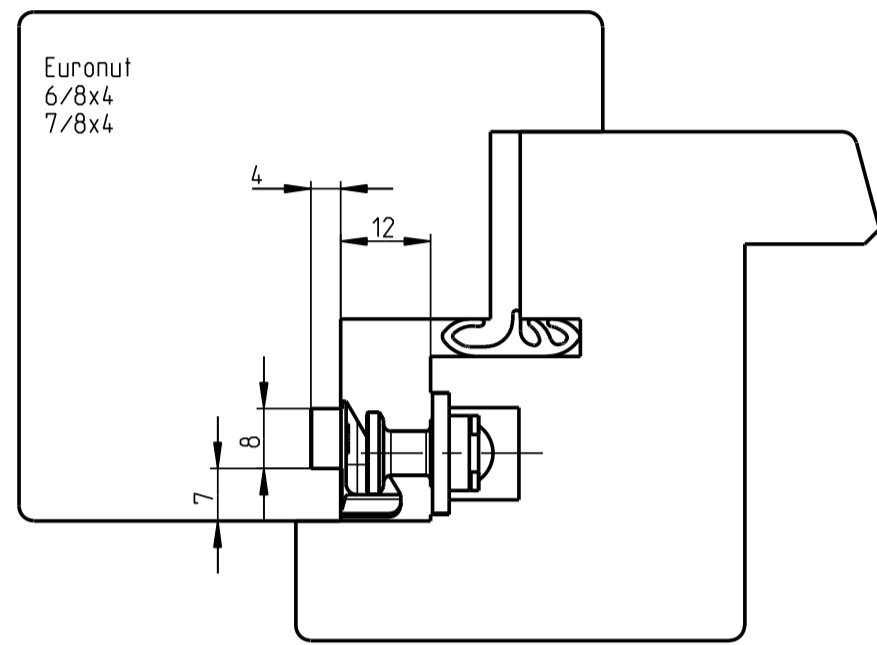
Description  
**Parallelschiebe-Kippbeschlag G.U-966/150 oZ Holz Eurofalz 18x8, 20x8 und 24x8 Euronut 7/8x4**

|                            |          |          |       |              |                   |
|----------------------------|----------|----------|-------|--------------|-------------------|
| Release No.                | Level    | released | Scale | Modification | Size              |
| Mod. No. 023190            | Ver.     | --       | %     | 3            | 1                 |
| Draft                      | 23.05.06 | Zv       |       | Drawing No.  | Sheet             |
| Replacement for 0-43924-BL |          |          |       |              | <b>0-44573-BL</b> |

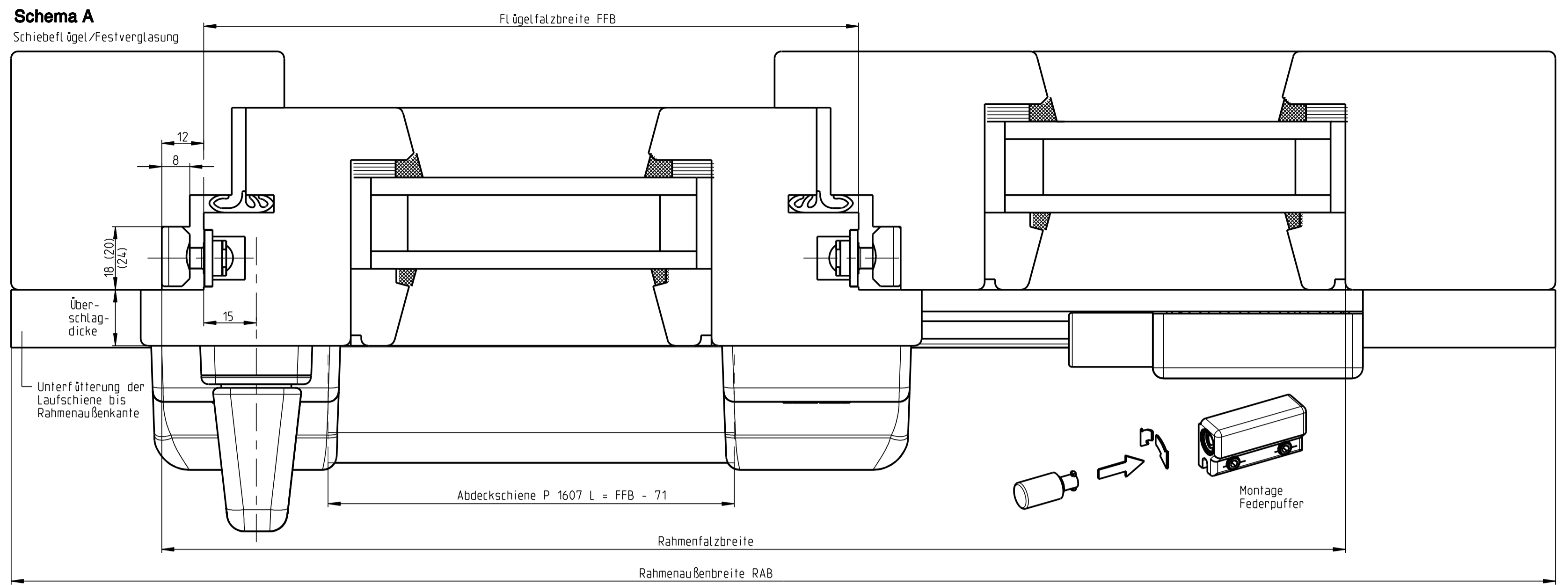
Verriegelung des Scherenbolzens durch Inbusschüssel SW 4.  
Um sichere Verriegelung zu prüfen, kräftig am Scherenarm ziehen.



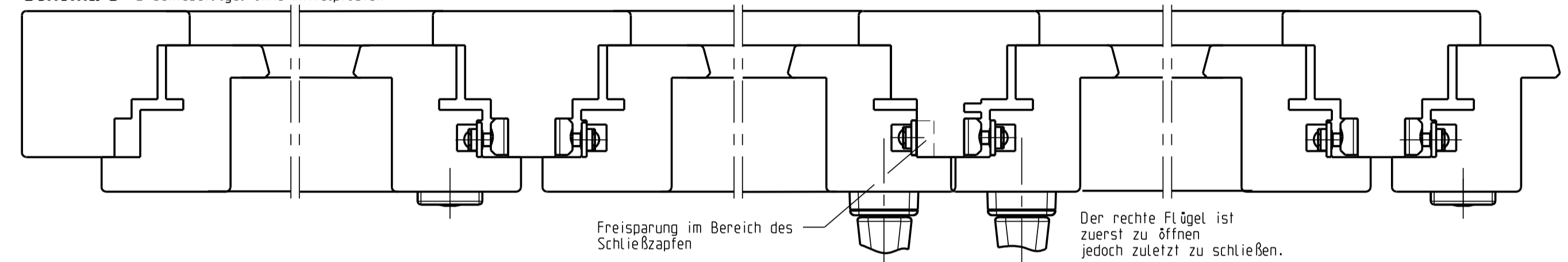
\* Bei Eurofalz 24x8 ist NL 13 erforderlich.



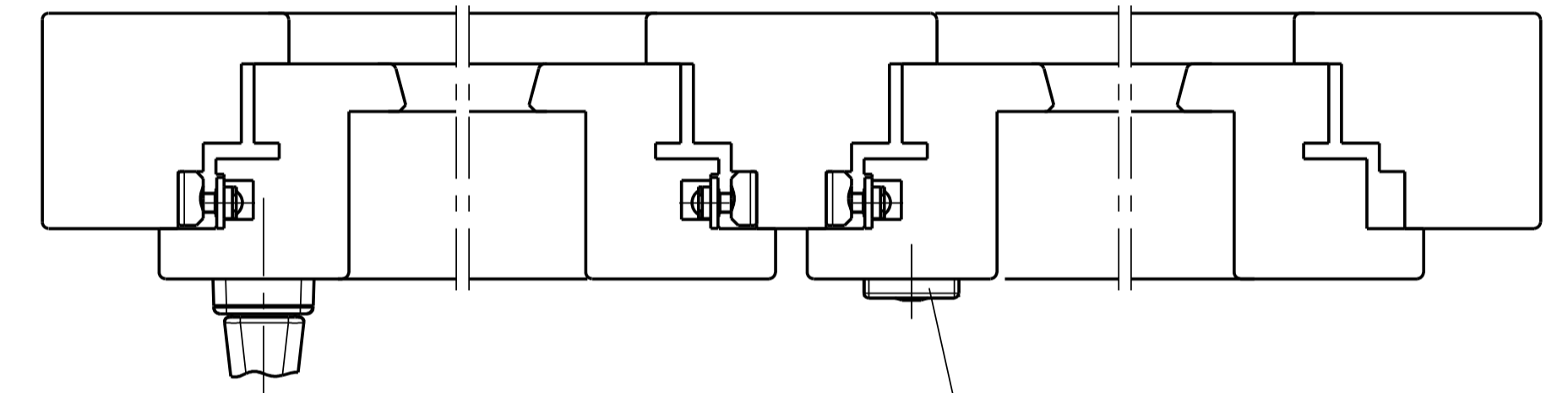
**Schema A**  
Schiebeflügel/Festverglasung



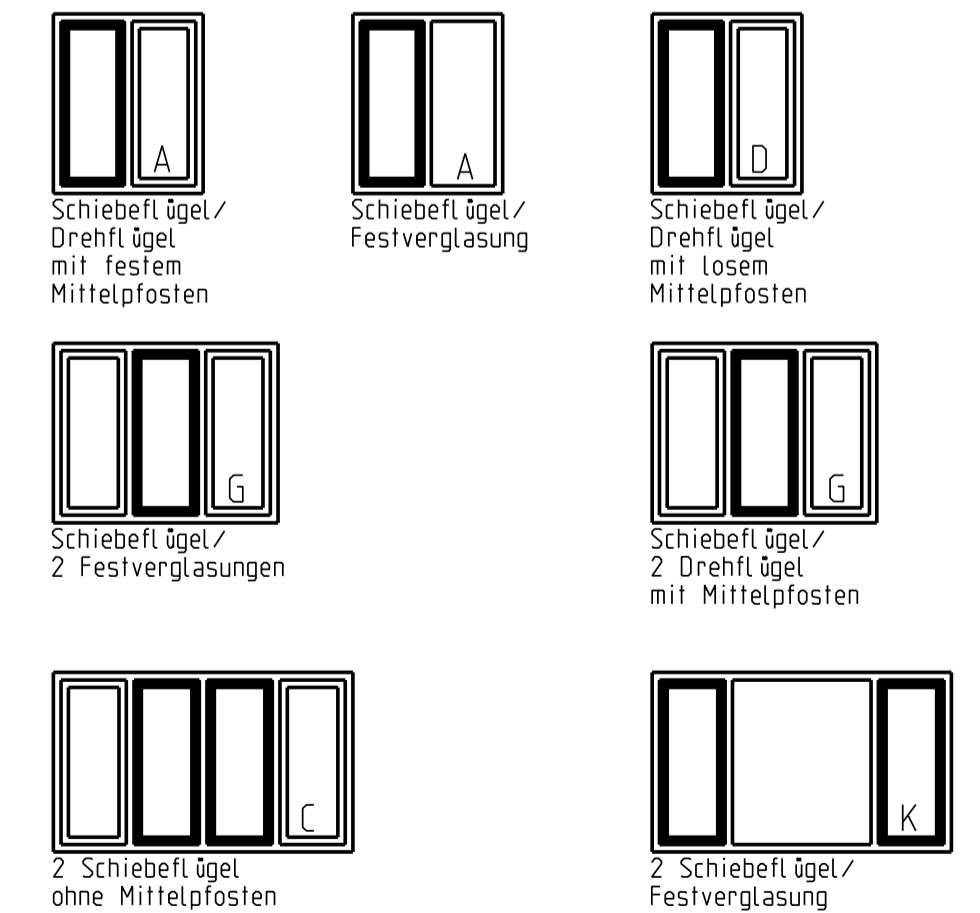
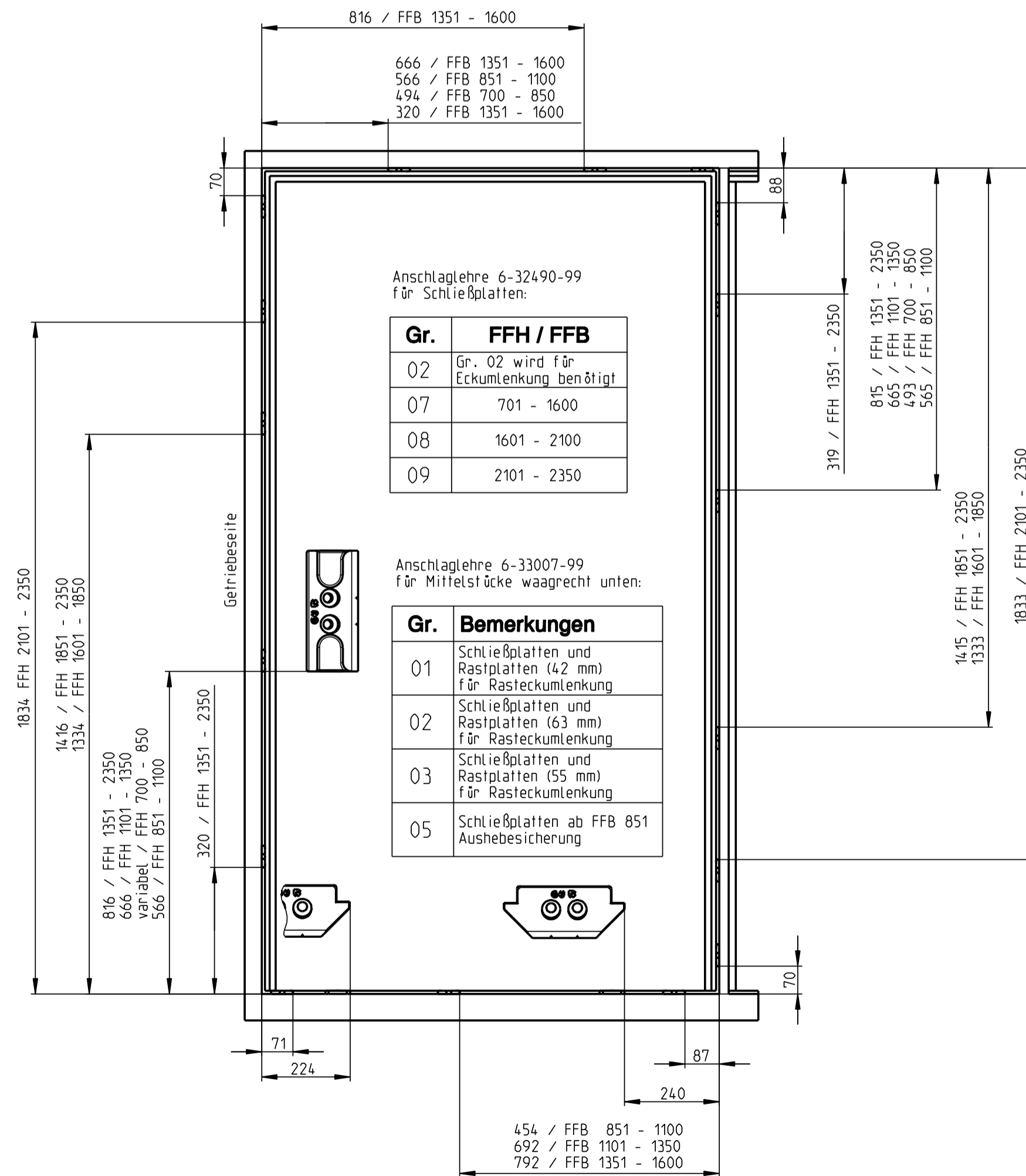
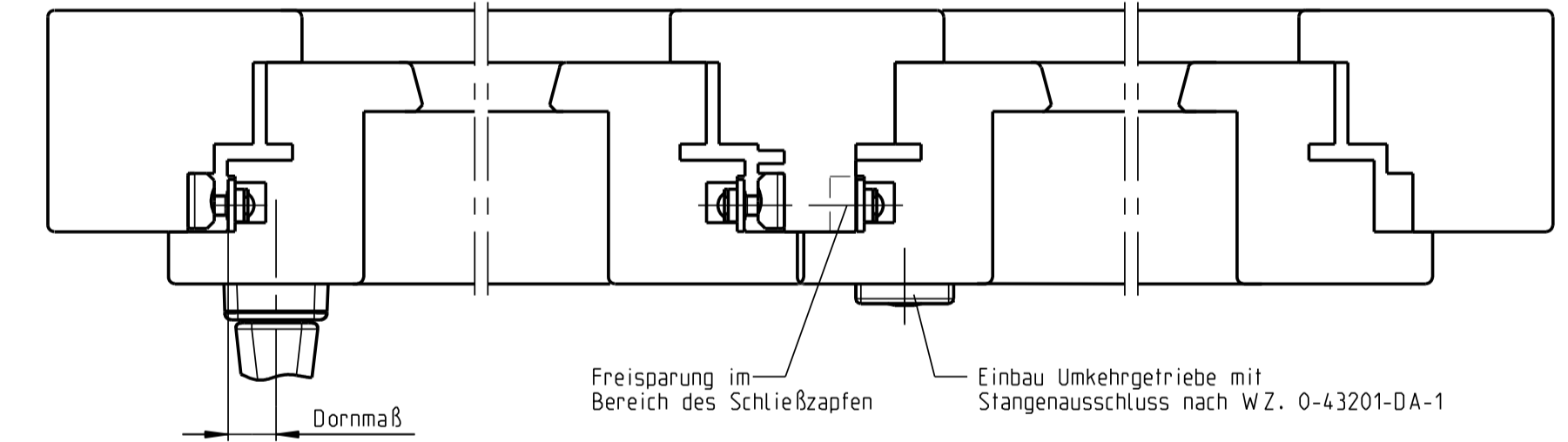
**Schema C** 2 Schiebeflügel ohne Mittelpfosten



**Schema A** Schiebeflügel/Drehflügel mit festem Mittelpfosten

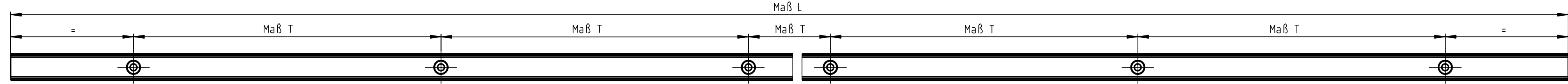


**Schema D** Schiebeflügel/Drehflügel mit losem Mittelpfosten

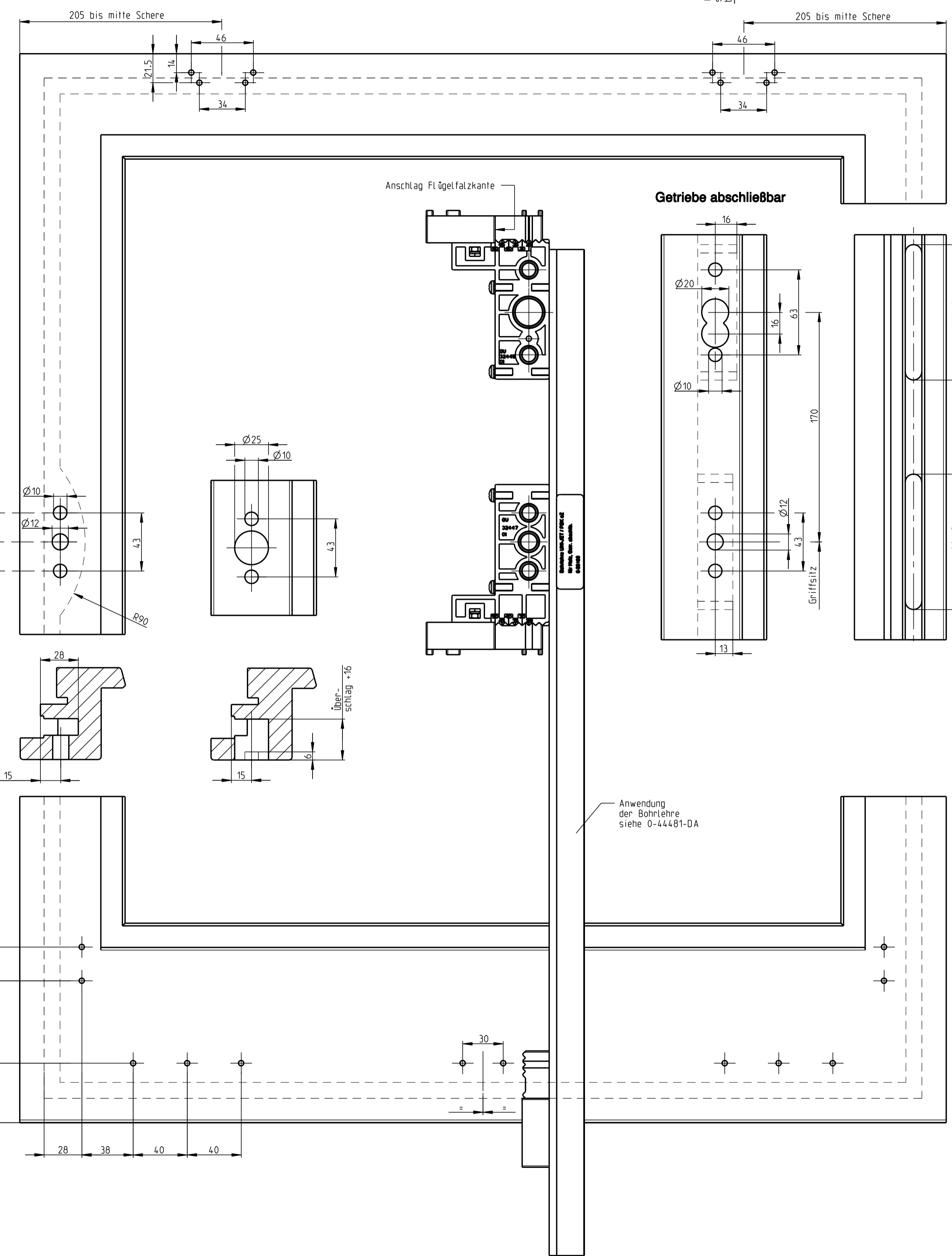
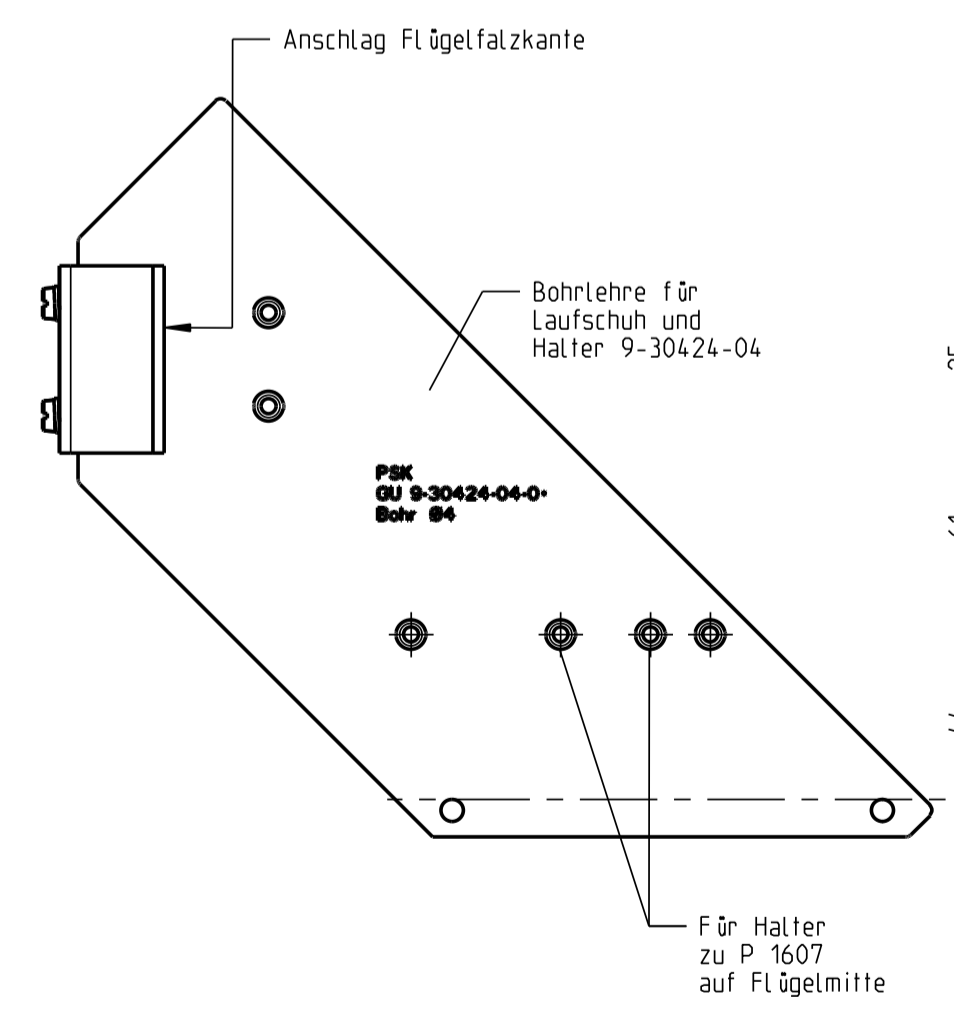
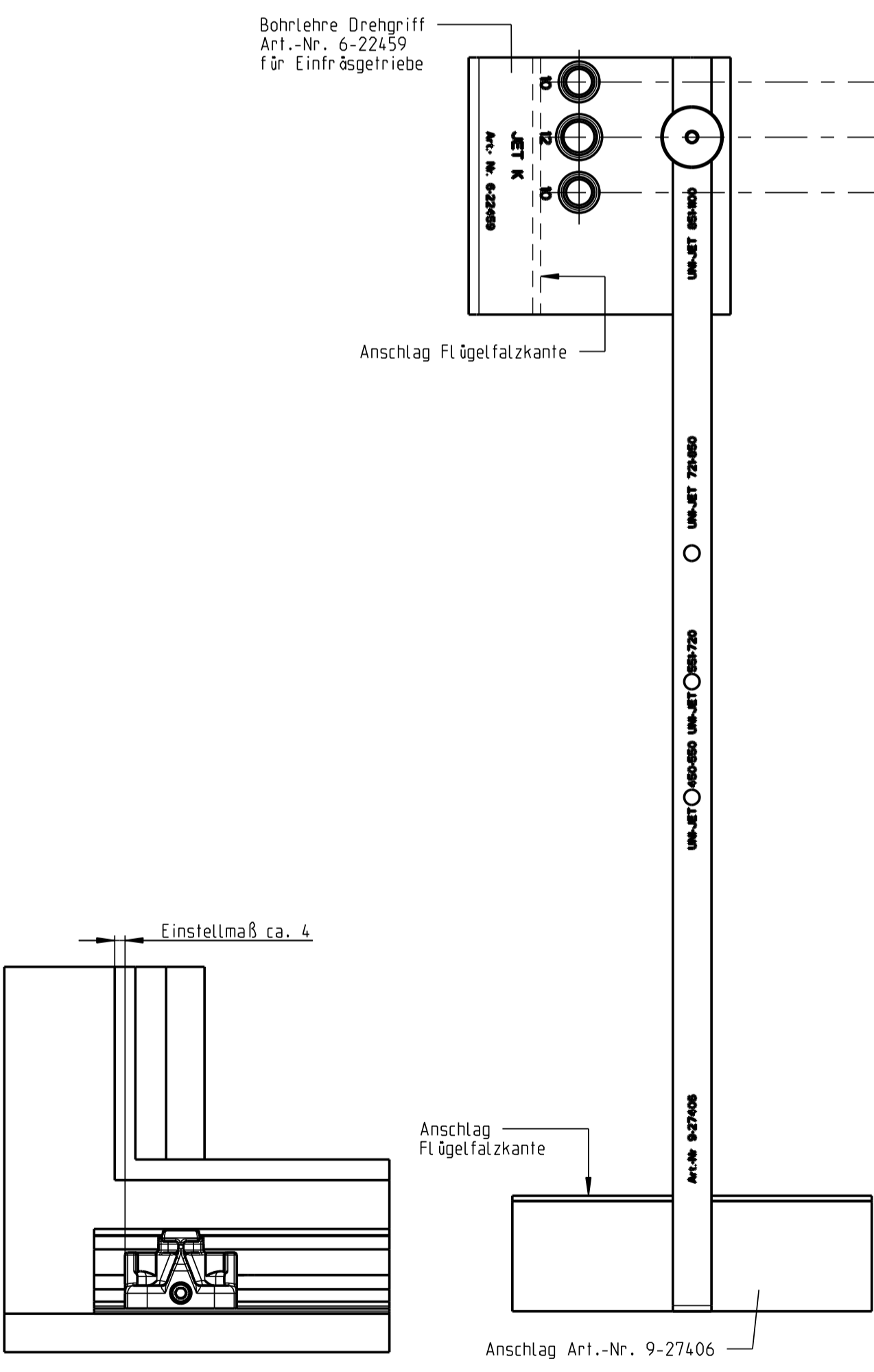
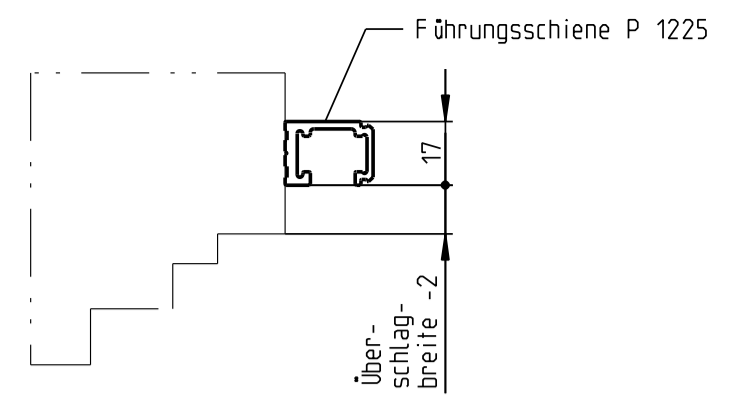


Description  
**Parallelschiebe-Kippbeschlag G.U-966/150 oZ Holz**  
Eurofalz 18x8, 20x8 und 24x8  
Euronut 7/8x4

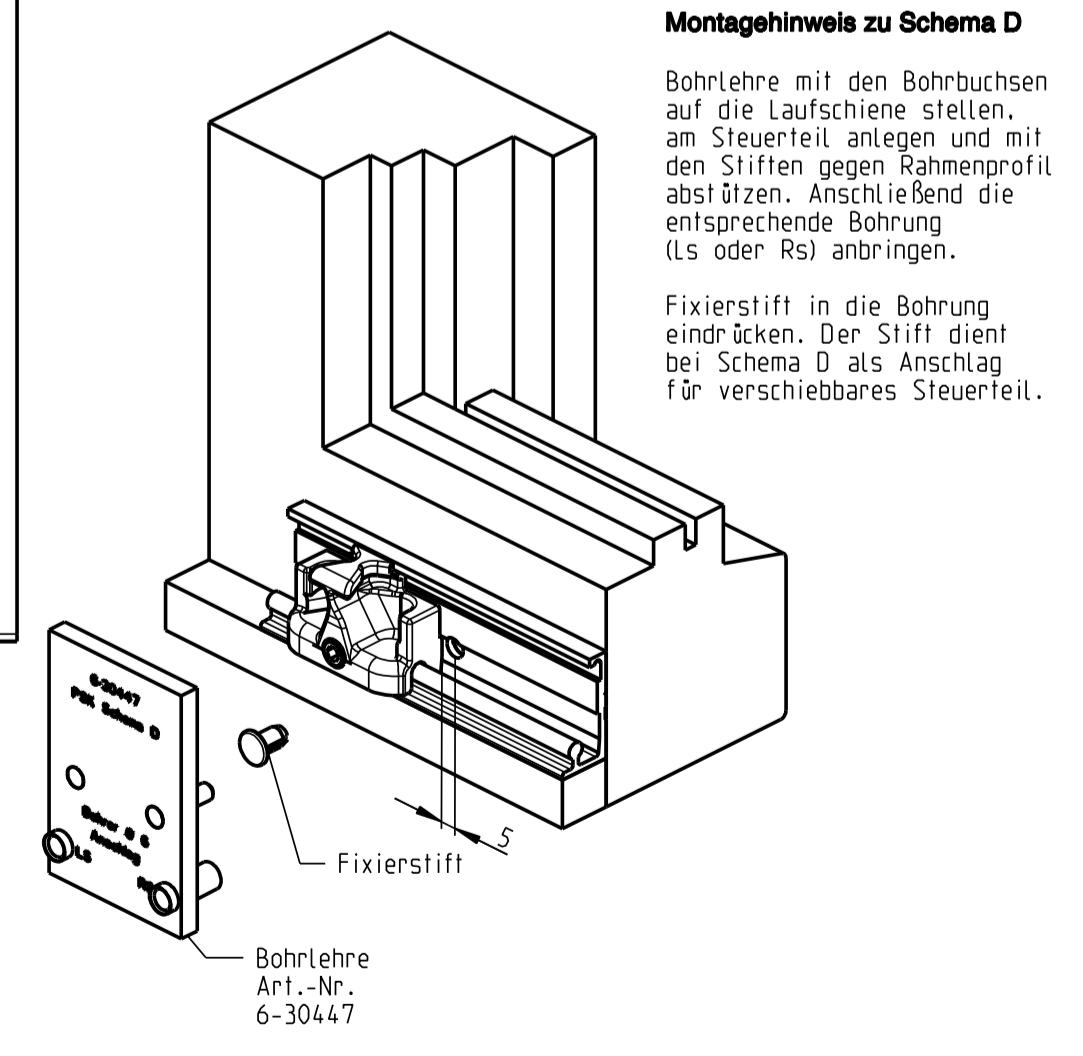
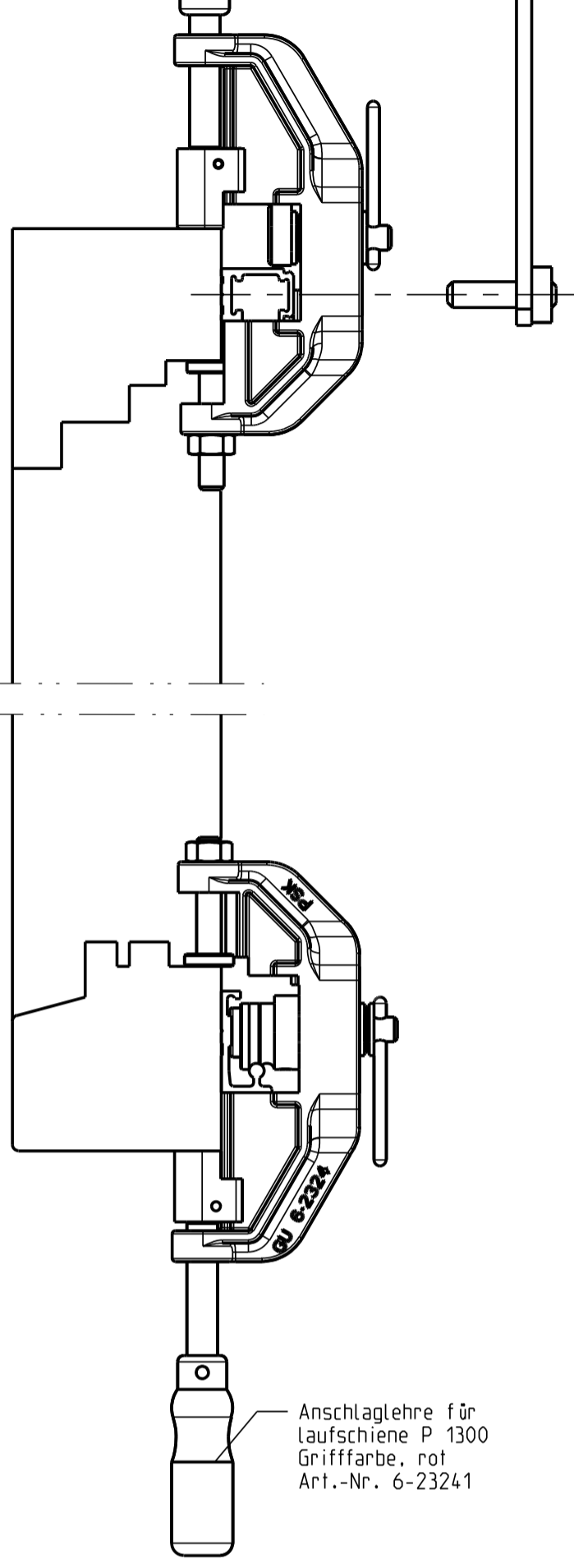
|                            |                    |       |          |       |                   |       |
|----------------------------|--------------------|-------|----------|-------|-------------------|-------|
| GÜBELS<br>FERCO            | Release No.        | Level | released | Scale | Modification      | Size  |
|                            | Mod. No.<br>023190 | Ver.  | --       | %     | 3                 | 1     |
| Replacement for 0-43924-BL |                    | Draft | 23.05.06 | Zv    | Drawing No.       | Sheet |
|                            |                    |       |          |       | <b>0-44573-BL</b> | 2/3   |



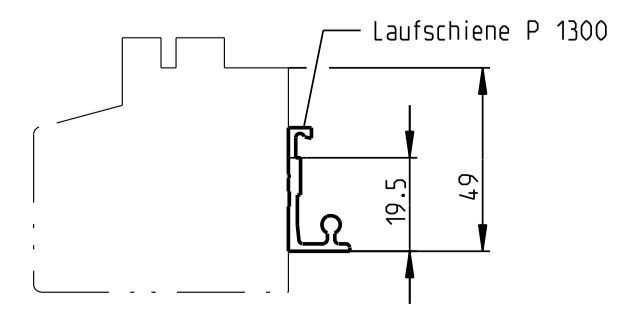
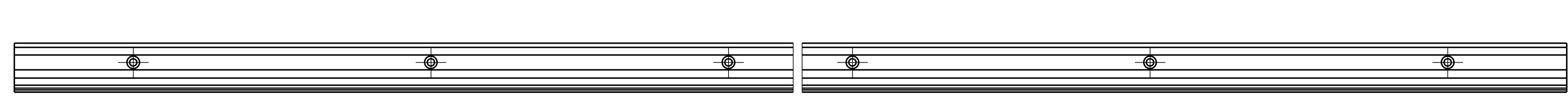
| Gr. | FFB        | Maß L | Anzahl der Schraublöcher | Teilung / Maß T | Verwendung  |
|-----|------------|-------|--------------------------|-----------------|---|
| 20  | 600-850    | 1960  | 10                       | 200             | Führungs-<br>P 1225<br>und<br>Laufschiene<br>P 1300 |
| 25  | 851-1100   | 2460  | 13                       |                 |   |
| 30  | 1101-1350  | 2960  | 15                       |                 |   |
| 35  | 1351-1600  | 3460  | 18                       |                 |   |
| 67  | Lagerlänge | 6700  | 34                       |                 |   |



Getriebe abschließbar



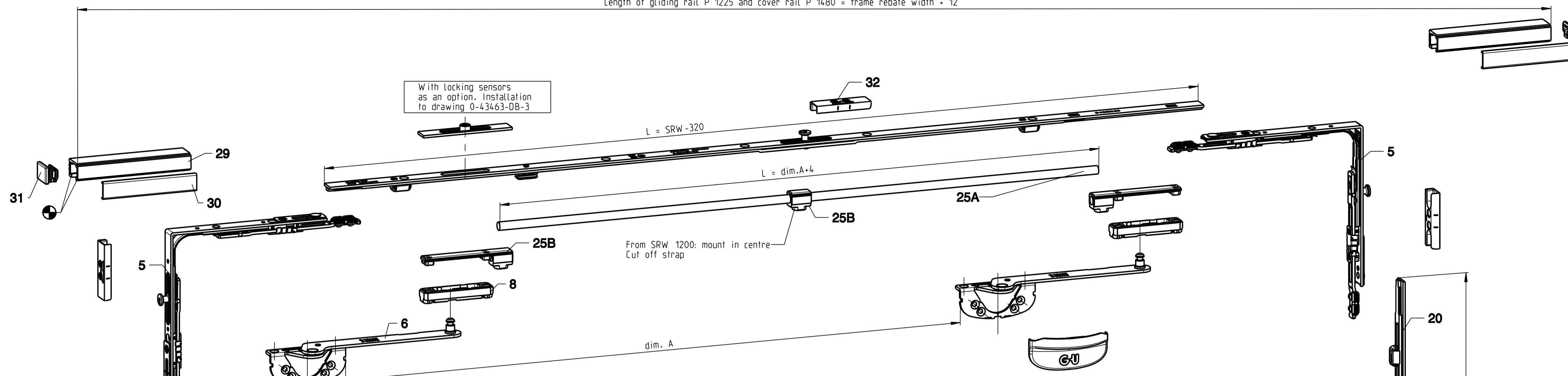
**Montagehinweis zu Schema D**  
Bohrlehre mit den Bohrbüchsen auf die Laufschiene stellen. am Steuer-teil anlegen und mit den Stift-en gegen Rahmenprofil ab-stützen. Anschließend die entsprechende Bohrung (Ls oder Rs) anbringen.  
Fixierstift in die Bohrung eindrücken. Der Stift dient bei Schema D als Anschlag für verschiebbares Steuer-teil.



Description  
**Parallelschiene - Kippbeschlag G.U-966/150 øZ Holz Eurofalz 18x8, 20x8 und 24x8 Euronut 7/8x4**

| Release No.        | Level | released | Scale | Modification | Size       |
|--------------------|-------|----------|-------|--------------|------------|
| --                 | Ver.  | --       | %     | 3            | 1          |
| Mod. No. 023190    | Draft | 16.12.08 | So    | Drawing No.  | Sheet      |
| Replacement for -- |       |          |       |              | 0-44573-BL |

Length of gliding rail P 1225 and cover rail P 1480 = frame rebate width + 12



With locking sensors as an option. Installation to drawing 0-43463-DB-3

**Mounting instructions**

Drillings to be carried out with existing jigs or according to dimensions stated.

**Mounting on sash**

- Mount central lock and tilt-turn fittings UNI-JET (see 0-44354-DD-1) in medium position. Cut fixed gear (item 20A) at mark (160 mm).
- Fix runners front and rear (items 1 and 2).
- Fix support (item 19) to sash centre.
- Shorten connecting rod (item 25) and insert into rear runner. Firmly tighten screw and slide connecting rod into closed position and tighten screw in front runner. Torque 10-12 Nm.
- Mount stays (item 6) in open position to dimensions stated.
- Mount cover (item 7).
- Mount turn handle (item 12)

**Mounting on frame**

- Screw on locking plates (item 32) and positioning plate (item 34).
- Mount gliding rail P 1225 (item 29) and cover rail P 1226 (item 30). From SRW 1200: clip together 2 stay arm gliders (item 8) with 2 coupling pieces (item 25B). Shorten rod (item 25A). Slide cut coupling piece (item 25B) onto rod up to centre. Insert rod with stay arm gliders and coupling pieces into gliding rail (item 29) and fasten clamping screws using a 4mm hex. Allen key. Put on covers (item 31).
- Running rail P 1300 (item 28) must be supported over its total length and fixed to the frame with screws.
- Mount running rail P 1300 (item 28) at bottom (for position of rail see profile assembly drawing).
- Slide control part (item 3) onto running rail and tighten clamping screw with 4 mm Allen key.

**Installing sliding sash**

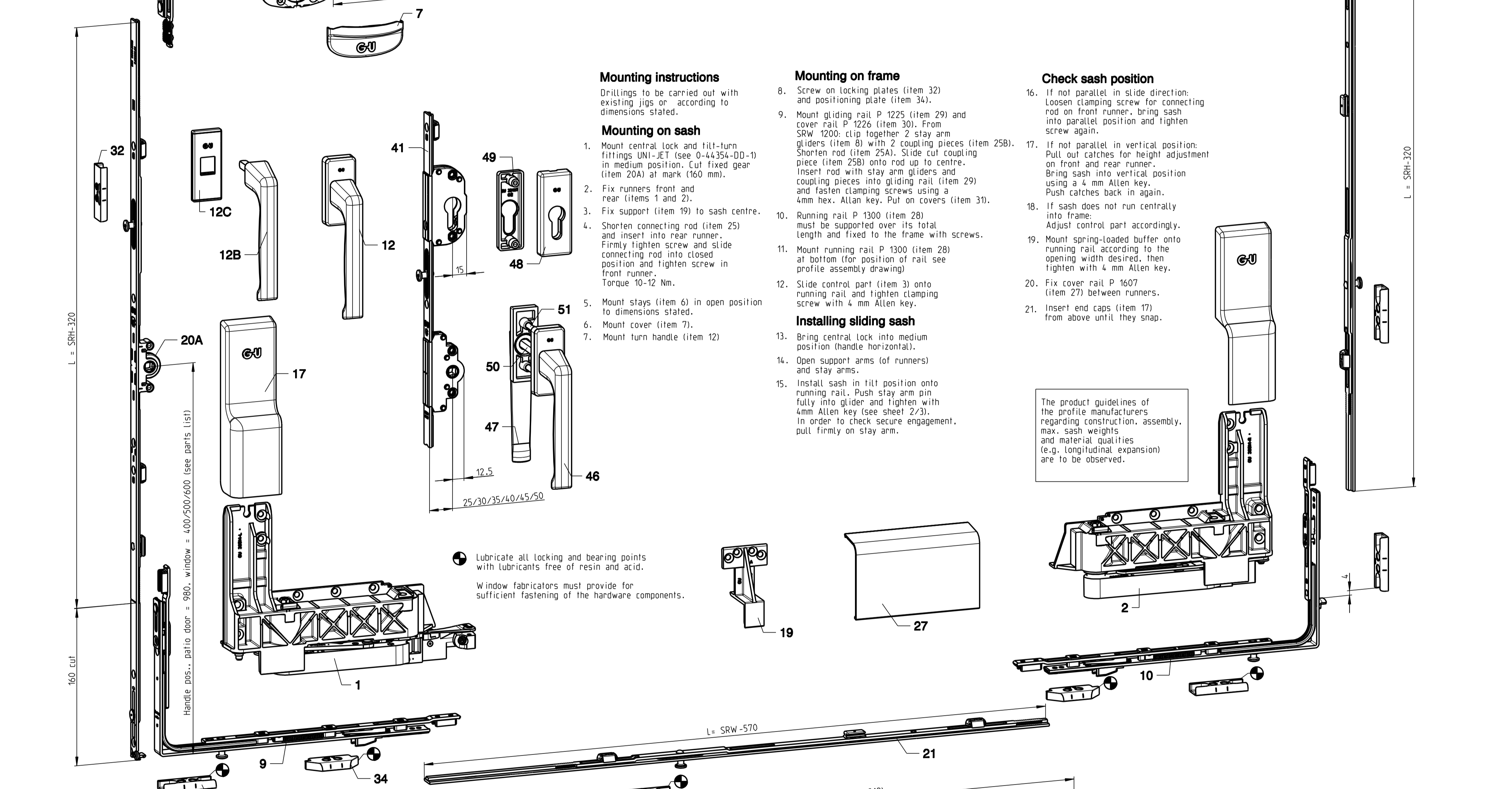
- Bring central lock into medium position (handle horizontal).
- Open support arms (of runners) and stay arms.
- Install sash in tilt position onto running rail. Push stay arm pin fully into glider and tighten with 4mm Allen key (see sheet 2/3). In order to check secure engagement, pull firmly on stay arm.

**Check sash position**

- If not parallel in slide direction. Loosen clamping screw, for connecting rod on front runner, bring sash into parallel position and tighten screw again.
- If not parallel in vertical position. Pull out catches for height adjustment on front and rear runner. Bring sash into vertical position using a 4 mm Allen key. Push catches back in again.
- If sash does not run centrally into frame. Adjust control part accordingly.
- Mount spring-loaded buffer onto running rail according to the opening width desired, then tighten with 4 mm Allen key.
- Fix cover rail P 1607 (item 27) between runners.
- Insert end caps (item 17) from above until they snap.

The product guidelines of the profile manufacturers regarding construction, assembly, max. sash weights and material qualities (e.g. longitudinal expansion) are to be observed.

Lubricate all locking and bearing points with lubricants free of resin and acid.  
Window fabricators must provide for sufficient fastening of the hardware components.

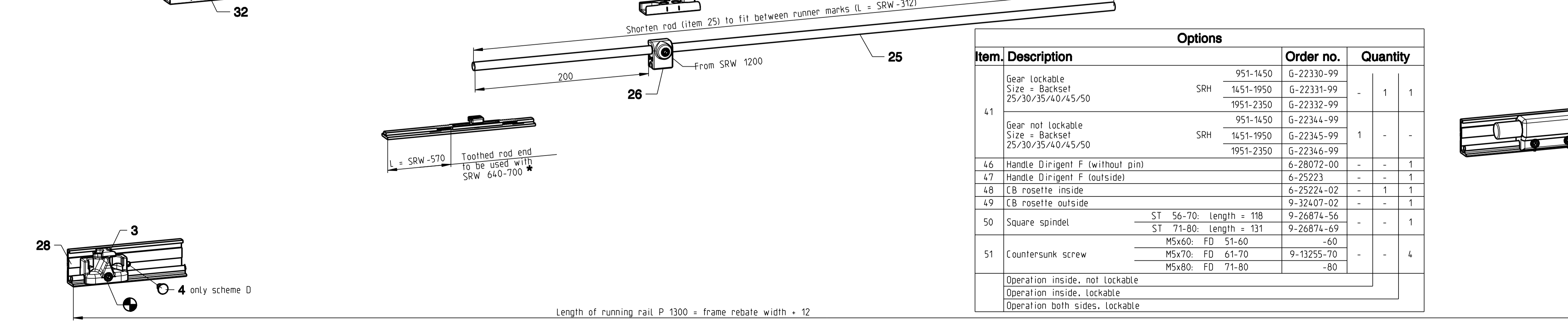


| Item | Description  | Order no.                       | Qty. per scheme |  |   |   |   |   |            |            |
|------|--|---------------------------------|-----------------|--|---|---|---|---|------------|------------|
|      |  |                                 | A               | C  | D | G | K |   |            |            |
| 1    | Runner   | 6-32544                         | front           | 1  | 1 | 1 | 1 | 1 |            |            |
|      |  |                                 | rear            | 1  | 1 | 1 | 1 | 1 |            |            |
| 2    | Control part   | 6-33329                         | 1               | 2  | 1 | 1 | 2 |   |            |            |
| 3    | Fixing pin - only scheme D                                 | 9-39897                         | -               | -  | 1 | - | - |   |            |            |
| 4    | Corner transmission  | 6-32021                         | 2               | 4  | 2 | 2 | 4 |   |            |            |
| 5    | Stay G.U-90 oZ   | 6-32302                         | 2               | 4  | 2 | 2 | 4 |   |            |            |
| 6    | Cover for stay arm G.U-90 oZ                               | 9-42435                         | 2               | 4  | 2 | 2 | 4 |   |            |            |
| 7    | Stay arm glider  | 6-22755                         | 2               | 4  | 2 | 2 | 4 |   |            |            |
| 8    | Corner transmission  | 6-32918                         | 1               | 2  | 1 | 1 | 2 |   |            |            |
| 9    | Corner transmission  | 6-32919                         | 1               | 2  | 1 | 1 | 2 |   |            |            |
| 10   | Handle Dirigent F (for window)                             | 6-28072-99                      | 1               | 2  | 1 | 1 | 2 |   |            |            |
| 11   | Handle Dirigent F (removable)                              | 8-00694                         | -               | -  | - | - | - |   |            |            |
| 12   | Rosette  | 6-24913                         | 1               | 2  | 1 | 2 | - |   |            |            |
| 13   | End cap 1 Pair (lh/rh)                                     | 9-38542-L/R                     | 2               | 4  | 2 | 2 | 4 |   |            |            |
| 14   | Spring-loaded buffer                                       | 6-29565                         | 1               | 2  | 1 | 1 | 2 |   |            |            |
| 15   | Support  | 9-38522                         | 1               | 2  | 1 | 1 | 2 |   |            |            |
| 20   | Centre gear vertical SRH 700-2350                          | SRH                             | Length          | ML   | 1 | 2 | 1 | 2 |            |            |
|      |  |                                 | 700-850         | 530  |   |   |   |   | 6-32494-30 |            |
|      |  |                                 | 851-1100        | 780  |   |   |   |   | 6-32494-40 |            |
|      |  |                                 | 1101-1350       | 1030   |   |   |   |   | 6-32494-50 |            |
|      |  |                                 | 1351-1600       | 1280   |   |   |   |   | 6-32494-60 |            |
|      |  |                                 | 1601-1850       | 1530   |   |   |   |   | 6-32494-70 |            |
| 20A  | Variable gear  | SRH                             | Length          | ML   | 1 | 2 | 1 | 2 |            |            |
|      |  |                                 | 700-750         | 430  |   |   |   |   | 295-375    | G-22081    |
|      |  |                                 | 751-850         | 880  |   |   |   |   | 375-600    | G-22082    |
|      |  |                                 | 851-1100        | 940  |   |   |   |   | 400        | G-22124    |
|      |  |                                 | 1101-1350       | 1190   |   |   |   |   | 500        | G-22125    |
|      |  |                                 | 1351-1600       | 1440   |   |   |   |   | 600        | G-22127    |
| 21   | Centre gear horizontal top SRW 640-1600                    | SRW                             | Length          | ML   | 1 | 2 | 1 | 2 |            |            |
|      |  |                                 | 640-700         | 415  |   |   |   |   | -          | 6-26741    |
|      |  |                                 | 701-850         | 530  |   |   |   |   | -          | 6-32494-30 |
|      |  |                                 | 851-1100        | 780  |   |   |   |   | 1          | 6-32494-40 |
|      |  |                                 | 1101-1350       | 1030   |   |   |   |   | 1          | 6-32494-50 |
|      |  |                                 | 1351-1600       | 1280   |   |   |   |   | 2          | 6-32494-60 |
| 25   | Rod Ø8   | SRW                             | Length          | ML   | 1 | 2 | 1 | 2 |            |            |
|      |  |                                 | 640-700         | 415  |   |   |   |   | -          | 6-26741    |
|      |  |                                 | 701-850         | 415  |   |   |   |   | -          | 6-26741    |
|      |  |                                 | 851-1100        | 530  |   |   |   |   | -          | 6-32494-35 |
|      |  |                                 | 1101-1350       | 780  |   |   |   |   | 1          | 6-32494-40 |
|      |  |                                 | 1351-1600       | 1030   |   |   |   |   | 1          | 6-32494-50 |
| 25A  | Rod Ø8 from SRW 1200 for Pos. 25B (Length as with item 25) | SRW                             | Length          | ML   | 1 | 2 | 1 | 2 |            |            |
|      |  |                                 | 640-700         | 415  |   |   |   |   | -          | 9-25476-06 |
|      |  |                                 | 701-850         | 530  |   |   |   |   | -          | 9-25476-09 |
|      |  |                                 | 851-1100        | 850  |   |   |   |   | -          | 9-25476-11 |
| 25B  | Closing pressure control (3 coupling pieces)               | SRW                             | Length          | ML   | 1 | 2 | 1 | 2 |            |            |
|      |  |                                 | 640-700         | 415  |   |   |   |   | -          | 9-25476-14 |
|      |  |                                 | 701-850         | 530  |   |   |   |   | -          | 9-25476-14 |
|      |  |                                 | 851-1100        | 850  |   |   |   |   | -          | 9-25476-14 |
| 26   | Guide from SRW 1200  | SRW                             | Length          | ML   | 1 | 2 | 1 | 2 |            |            |
|      |  |                                 | 640-850         | 1035   |   |   |   |   | -          | 9-38803-11 |
|      |  |                                 | 851-1100        | 1115   |   |   |   |   | -          | 9-38803-12 |
|      |  |                                 | 1101-1350       | 1535   |   |   |   |   | -          | 9-38803-16 |
| 27   | Cover rail bottom P 1607                                   | SRW                             | Length          | ML   | 1 | 2 | 1 | 2 |            |            |
|      |  |                                 | 640-850         | 1035   |   |   |   |   | -          | 9-38803-17 |
|      |  |                                 | 851-1100        | 1115   |   |   |   |   | -          | 9-38803-17 |
|      |  |                                 | 1101-1350       | 1535   |   |   |   |   | -          | 9-38803-17 |
| 28   | Running rail P 1300  | (Application range see sheet 3) | 9-31483-99      | 1  | 2 | 1 | 1 | 2 |            |            |
| 29   | Gliding rail P 1225  | lengths as with item 28         | 9-30140-99      | 1  | 2 | 1 | 1 | 2 |            |            |
| 30   | Cover rail P 1226  | lengths as with item 28         | 9-30141-99      | 1  | 2 | 1 | 1 | 2 |            |            |
| 31   | Cover for gliding rail                                     |                                 | 9-30142         | -  | - | - | - | 2 |            |            |
| 32   | Locking plate  | euro-rebated door 18x8          | 9-42301-18      | Quantity of locking plates depends on size of sash |   |   |   |   |            |            |
|      |  |                                 | 9-42301-20      |  |   |   |   |   |            |            |
|      |  |                                 | 9-42654         |  |   |   |   |   |            |            |
|      |  |                                 | 9-42620         |  |   |   |   |   |            |            |
| 34   | Positioning plate  | euro-rebated door 18x8          | 9-43636-18      | 2  | 4 | 2 | 2 | 4 |            |            |
|      |  |                                 | 9-43636-20      |  |   |   |   |   |            |            |
|      |  |                                 | 9-43636-24      |  |   |   |   |   |            |            |
|      |  |                                 | 9-30430         |  |   |   |   |   |            |            |

**Range of application:**  
SRW 640-1600  
SRH 700-2350  
Sash weight max. 130 kg

**Order specifications:**  
TFW (Total frame width)  
SRW (Sash rebate width)  
SRH (Sash rebate height)  
Assembly lh or rh (lh shown in drawing)  
Colour: EV1, UC3, UCS or white  
Scheme

The sash height must not exceed 2.5 times the sash width.

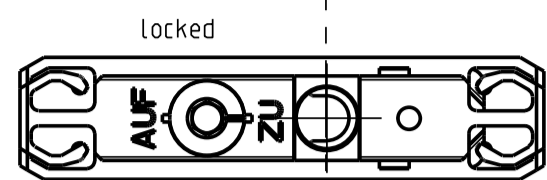
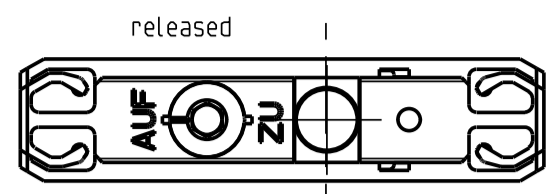


|                                |  | Options                |            |   |   |   |
|--------------------------------|--|------------------------|------------|---|---|---|
| Item                           | Description  | Order no.              | Quantity   |   |   |   |
| 41                             | Gear lockable<br>Size = Backset<br>25/30/35/40/45/50     | 951-1450               | G-22330-99 | - | 1 |   |
|                                |  | 1451-1950              | G-22331-99 | - | 1 |   |
|                                |  | 1951-2350              | G-22332-99 | - | 1 |   |
| 41                             | Gear not lockable<br>Size = Backset<br>25/30/35/40/45/50 | 951-1450               | G-22344-99 | 1 | - |   |
|                                |  | 1451-1950              | G-22345-99 | - | - |   |
|                                |  | 1951-2350              | G-22346-99 | - | - |   |
| 46                             | Handle Dirigent F (without pin)                          | 6-28072-00             | -          | - | 1 |   |
| 47                             | Handle Dirigent F (outside)                              | 6-25223                | -          | - | 1 |   |
| 48                             | CB rosette inside  | 6-25224-02             | -          | 1 | 1 |   |
| 49                             | CB rosette outside                                       | 9-32407-02             | -          | - | 1 |   |
| 50                             | Square spindel   | ST 56-70: Length = 118 | 9-26874-56 | - | - | 1 |
|                                |  | ST 71-80: Length = 131 | 9-26874-69 | - | - | 1 |
| 51                             | Countersunk screw  | M5x60: FD 51-60        | -60        | - | - | 4 |
|                                |  | M5x70: FD 61-70        | 9-13255-70 | - | - | 4 |
|                                |  | M5x80: FD 71-80        | -80        | - | - | 4 |
|                                |  | M5x80: FD 71-80        | -80        | - | - | 4 |
| Operation inside, not lockable |  |                        |            |   |   |   |
| Operation inside, lockable     |  |                        |            |   |   |   |
| Operation both sides, lockable |  |                        |            |   |   |   |

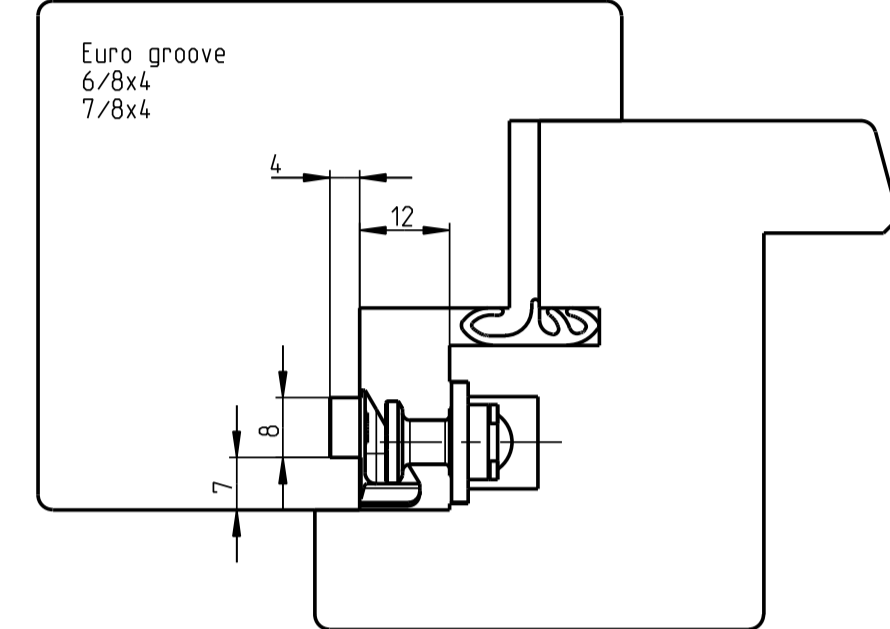
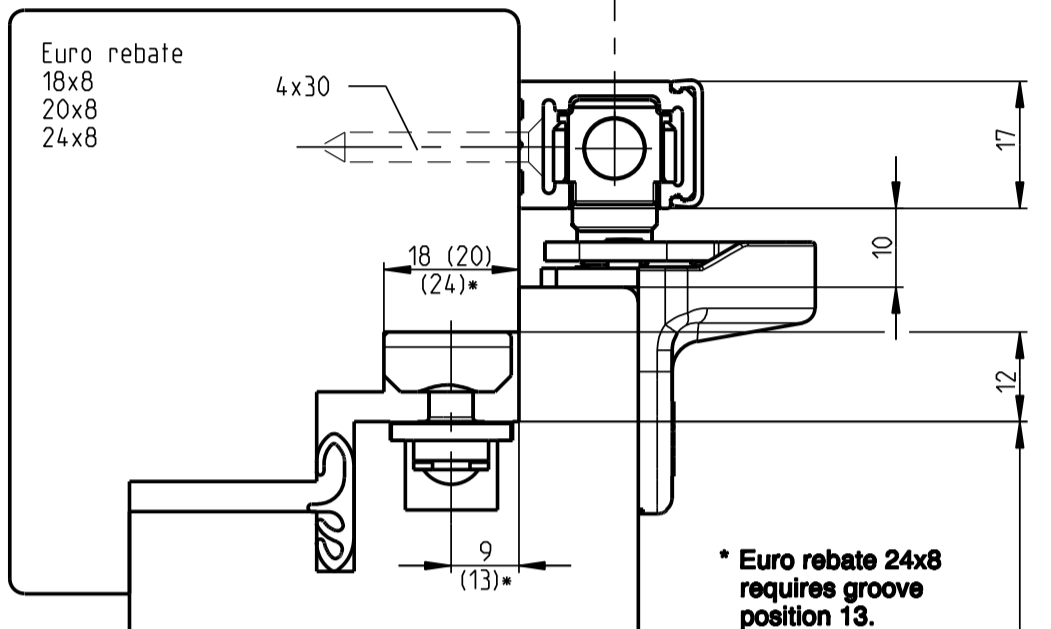
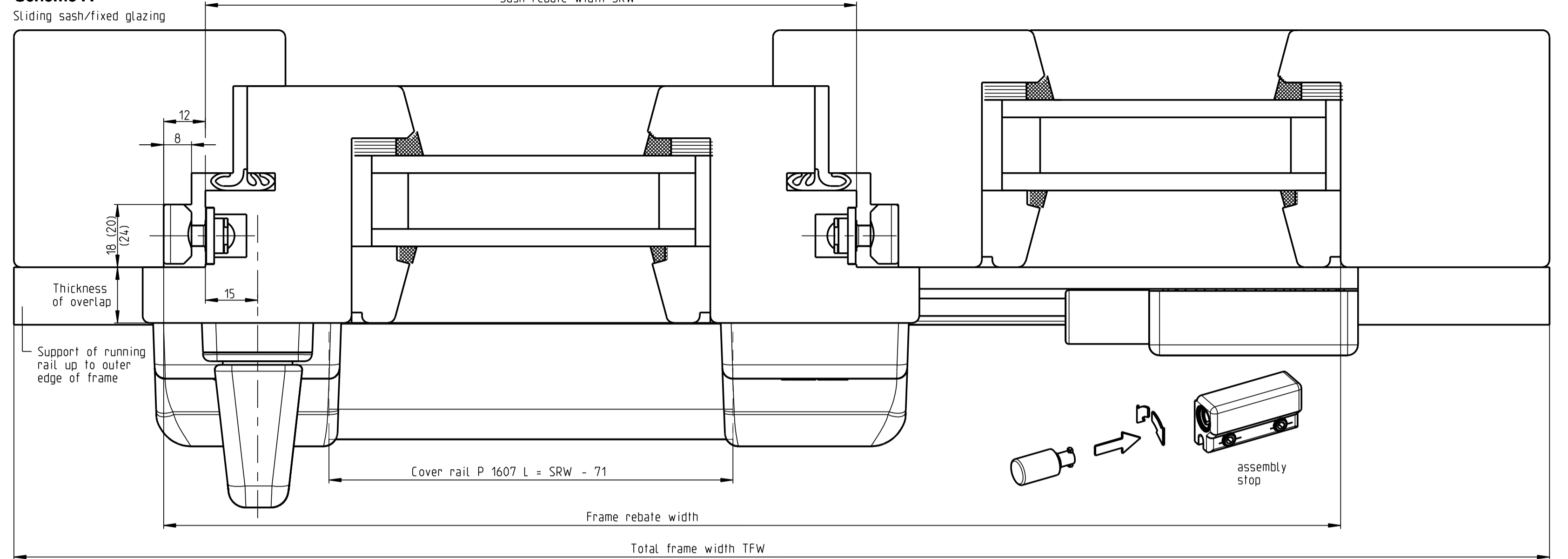
Description  
**Parallel slide and tilt fittings C.U-966/150 oZ Timber Euro-rebate 18x8, 20x8 and 24x8 Euro-groove 7/8x4**

|                            |          |          |       |              |                    |
|----------------------------|----------|----------|-------|--------------|--------------------|
| Release No.                | Level    | released | Scale | Modification | Size               |
| Mod. No. 023190            | Ver.     | --       | %     | 3            | 1                  |
| Draft                      | 23.05.06 | Zv       |       | Drawing No.  | Sheet              |
| Replacement for 0-43924-BL |          |          |       |              | <b>GB-44573-BL</b> |

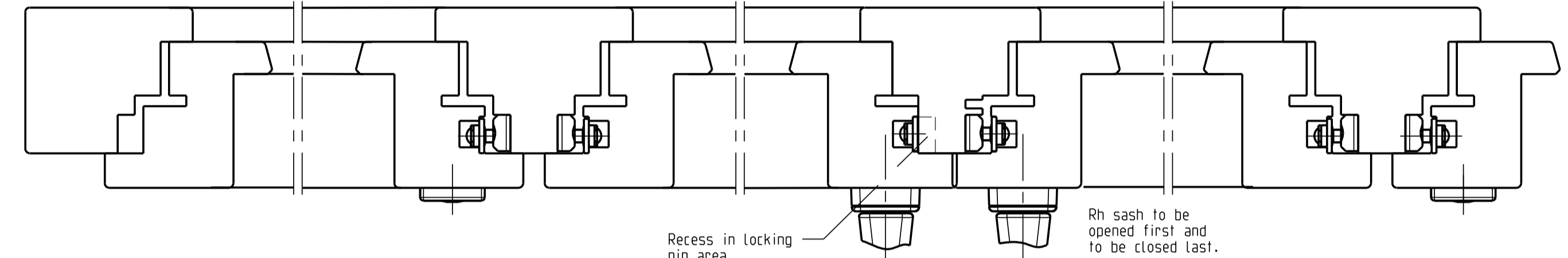
Locking of stay arm pin into glider with 4mm Allen key. In order to check secure engagement, pull firmly on stay arm.



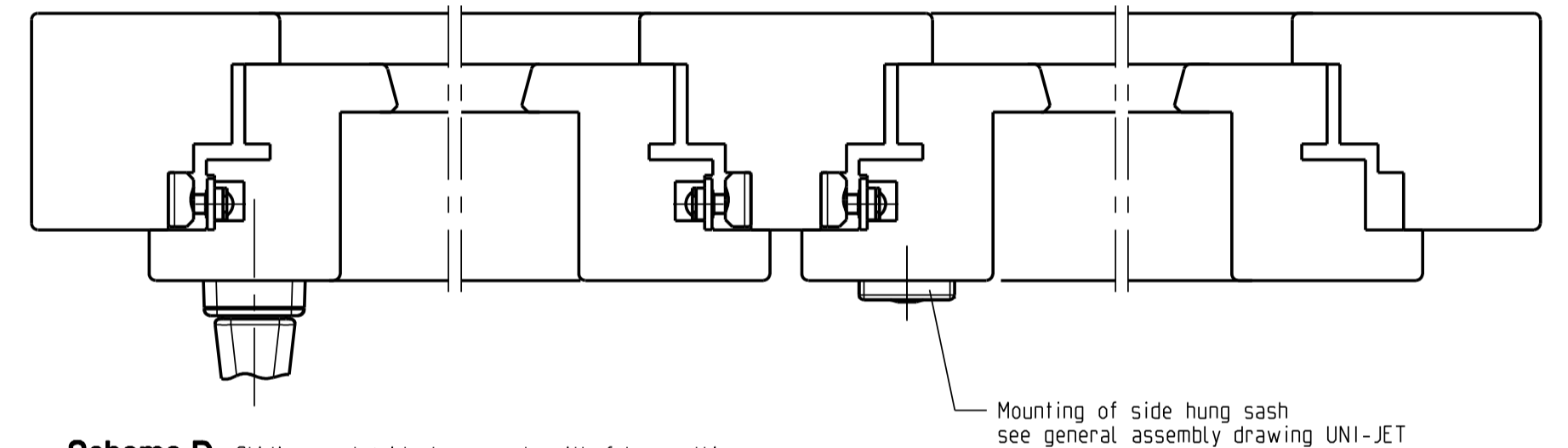
**Scheme A**



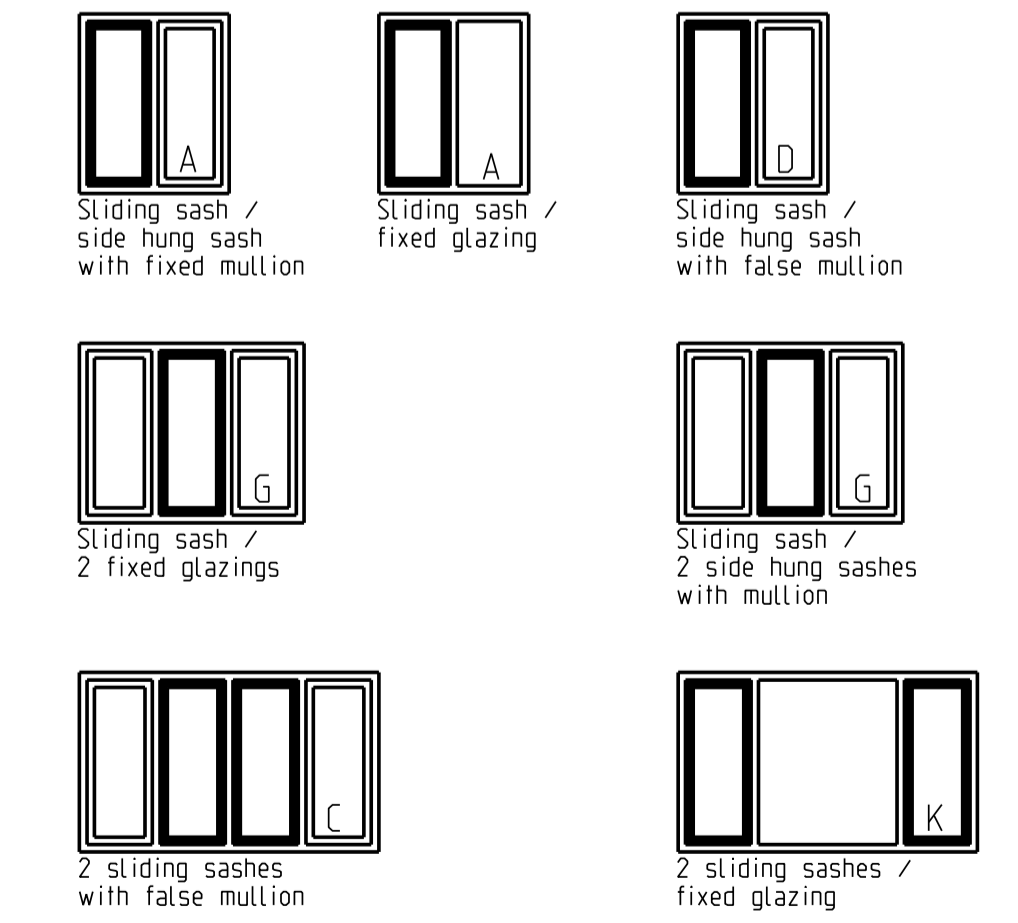
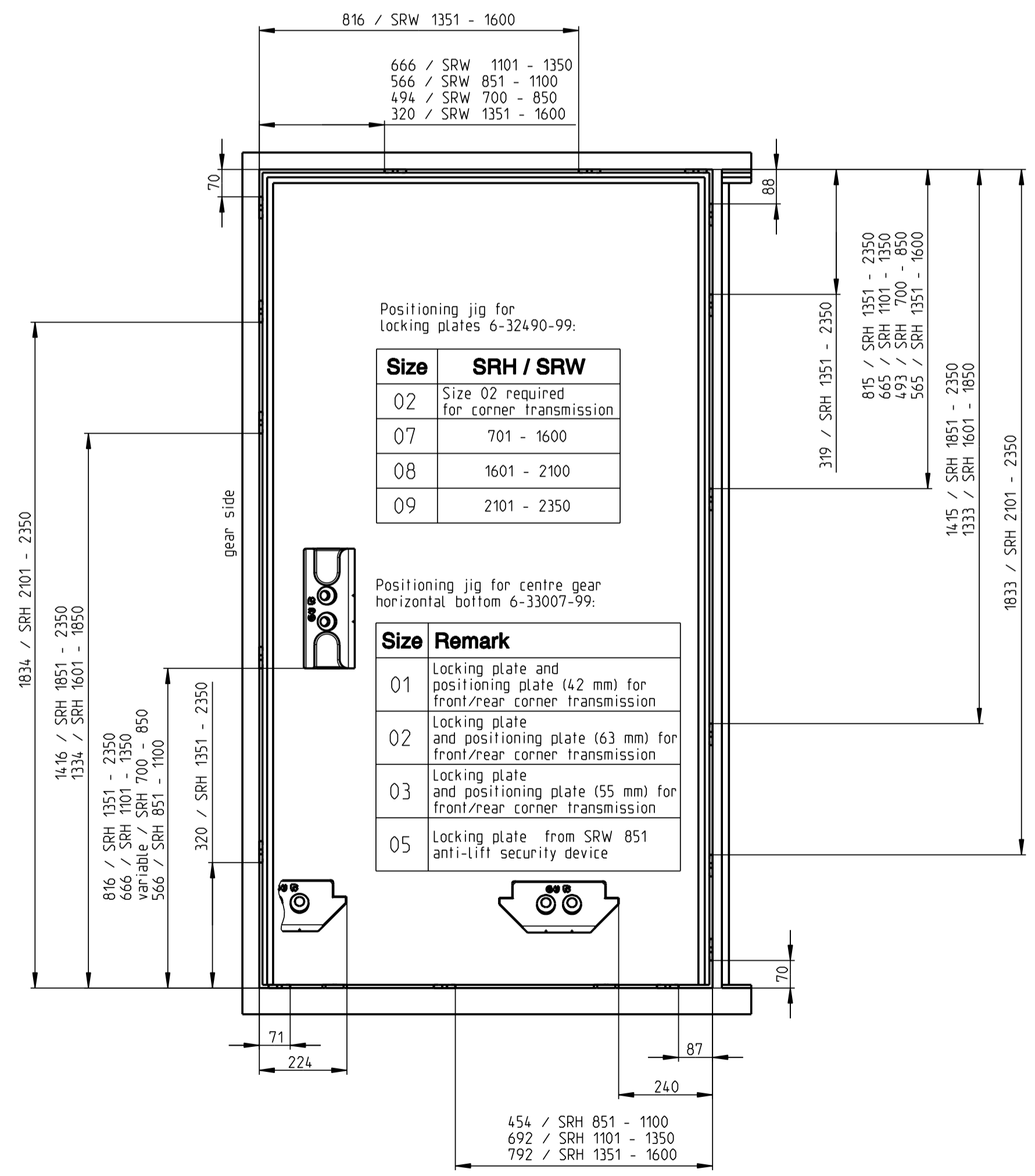
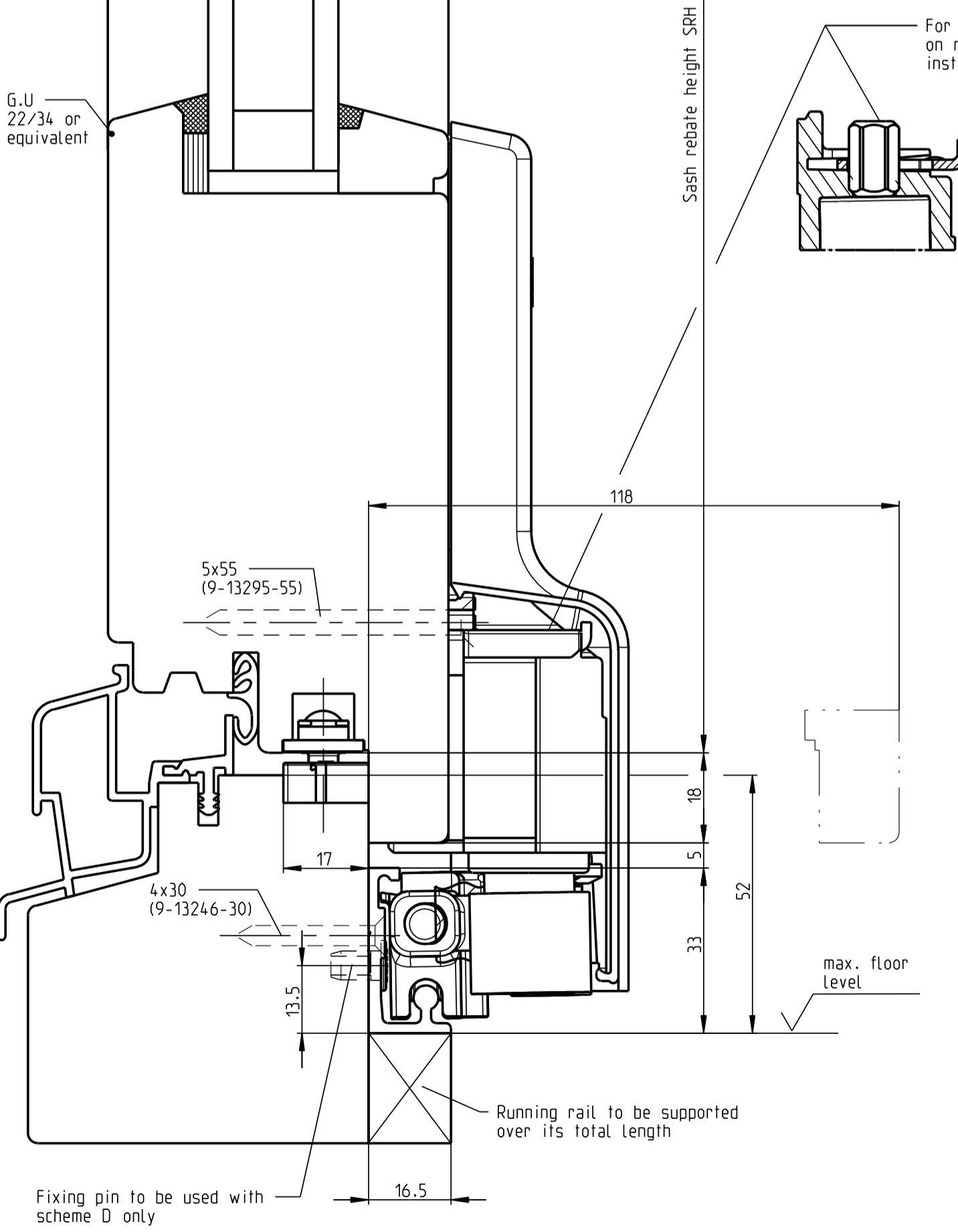
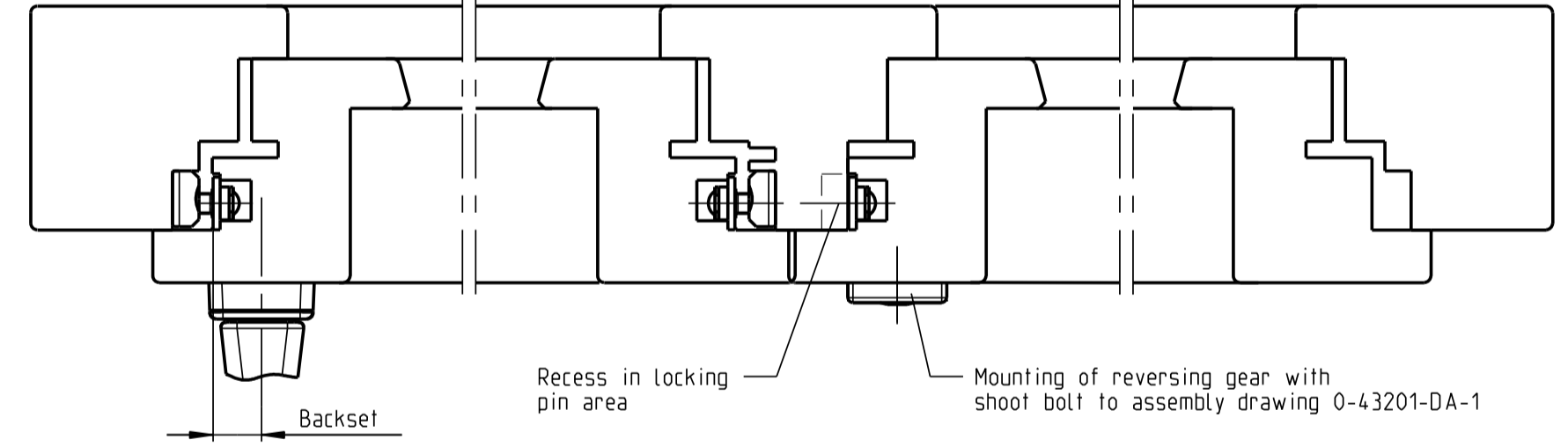
**Scheme C** 2 sliding sashes without mullion



**Scheme A** Sliding sash/side hung sash with fixed mullion

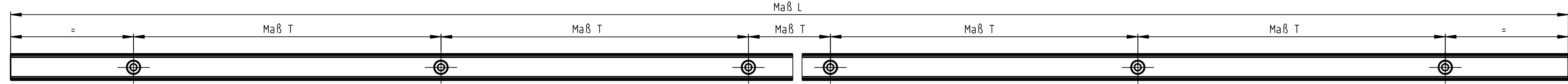


**Scheme D** Sliding sash/side hung sash with false mullion

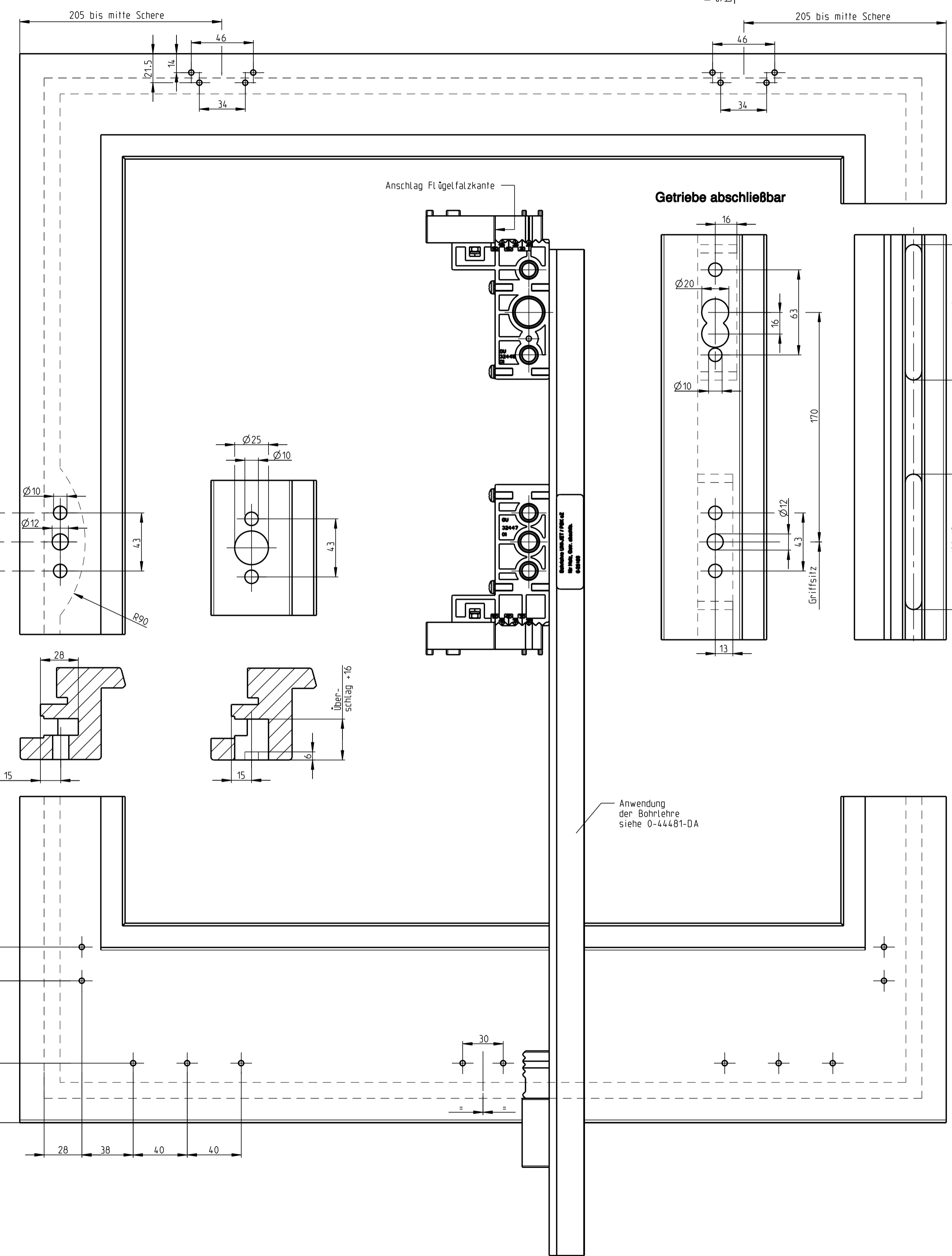
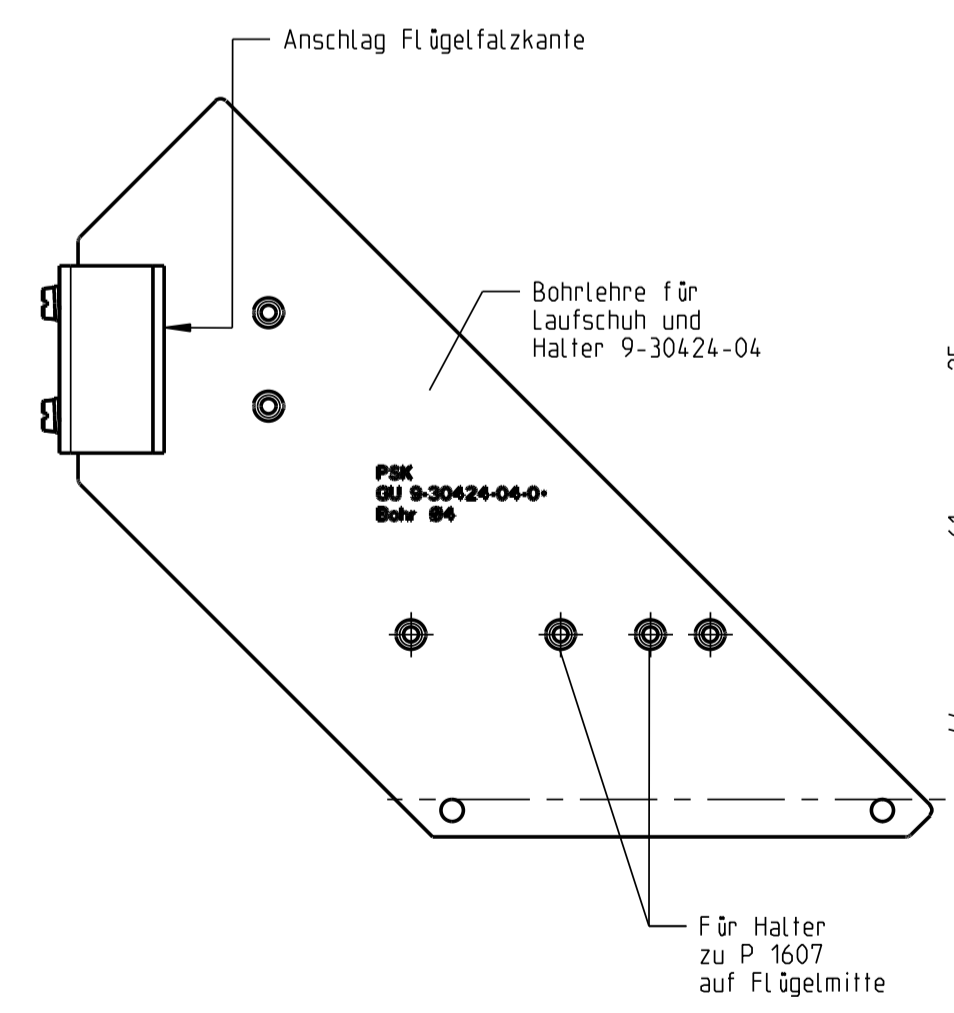
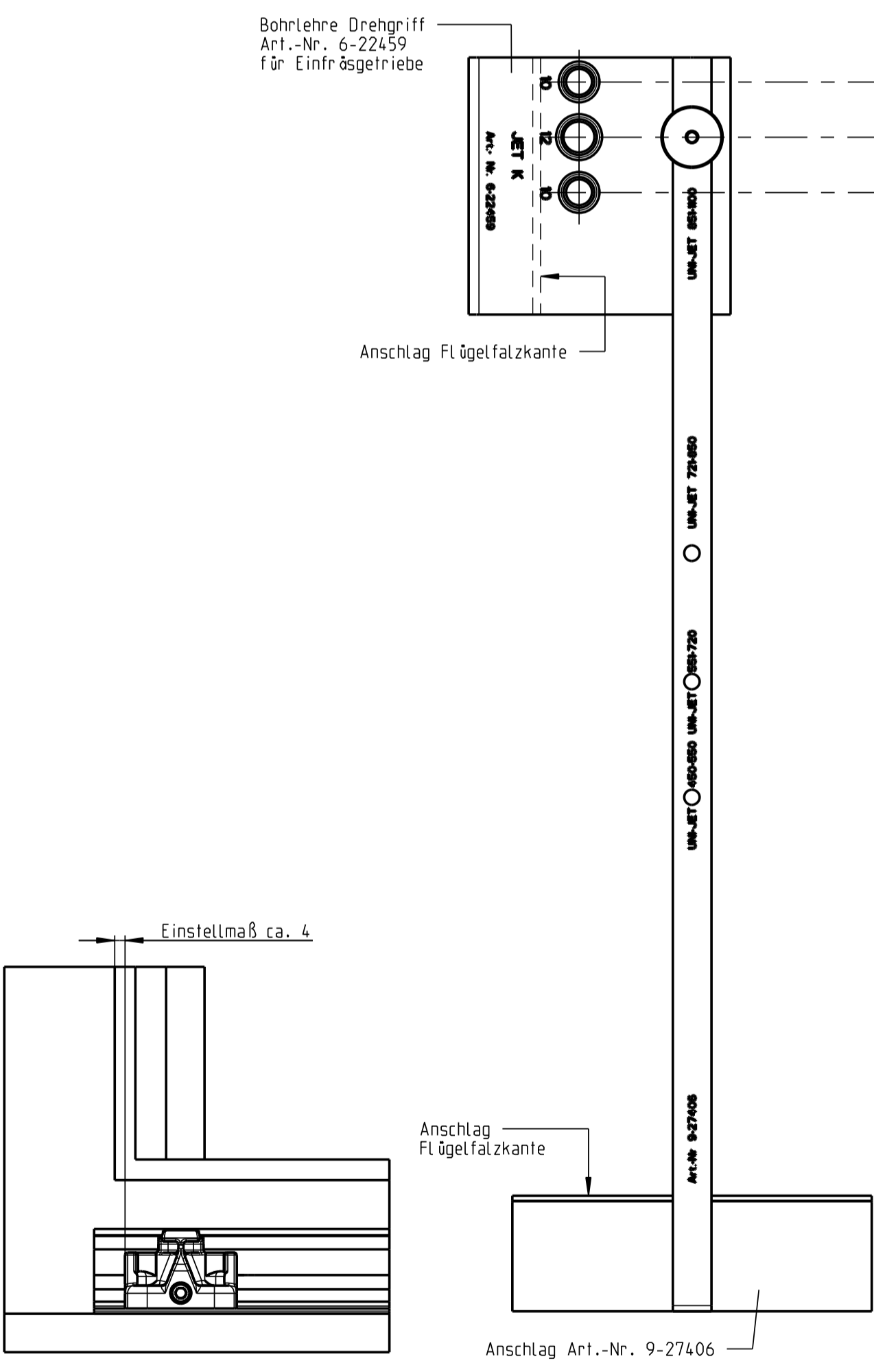
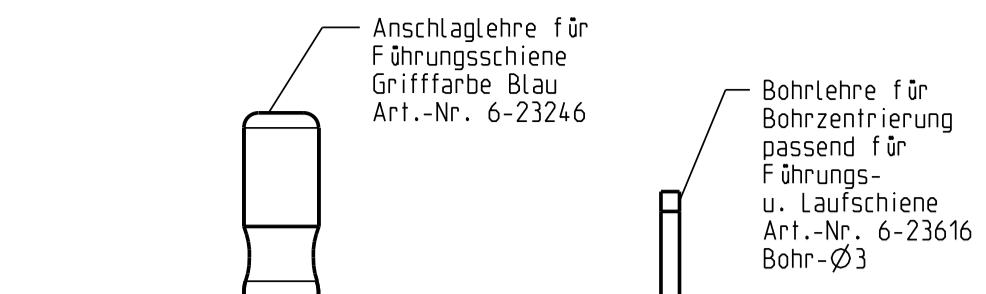
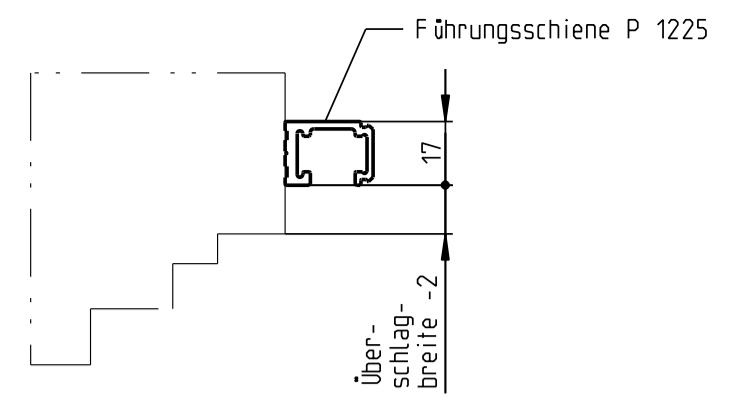


Description  
**Parallel slide and tilt fittings G.U-966/150 oZ timber, Euro-rebate 18x8, 20x8 and 24x8 Euro-groove 7/8x4**

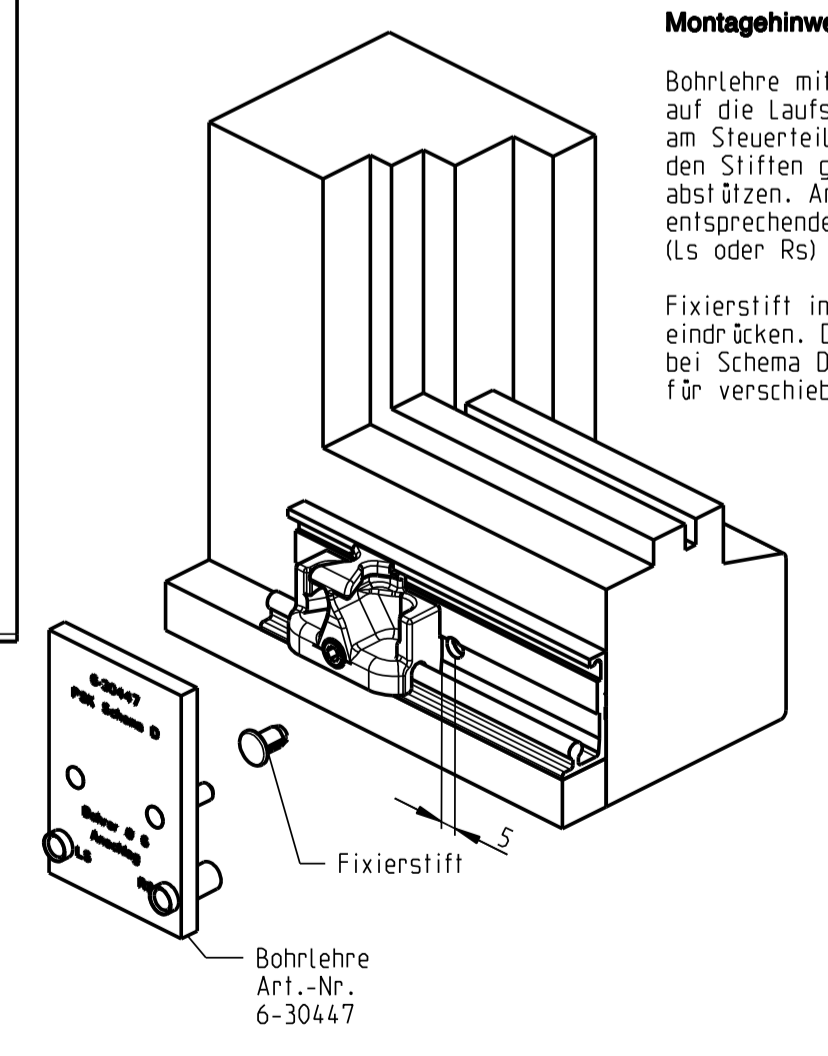
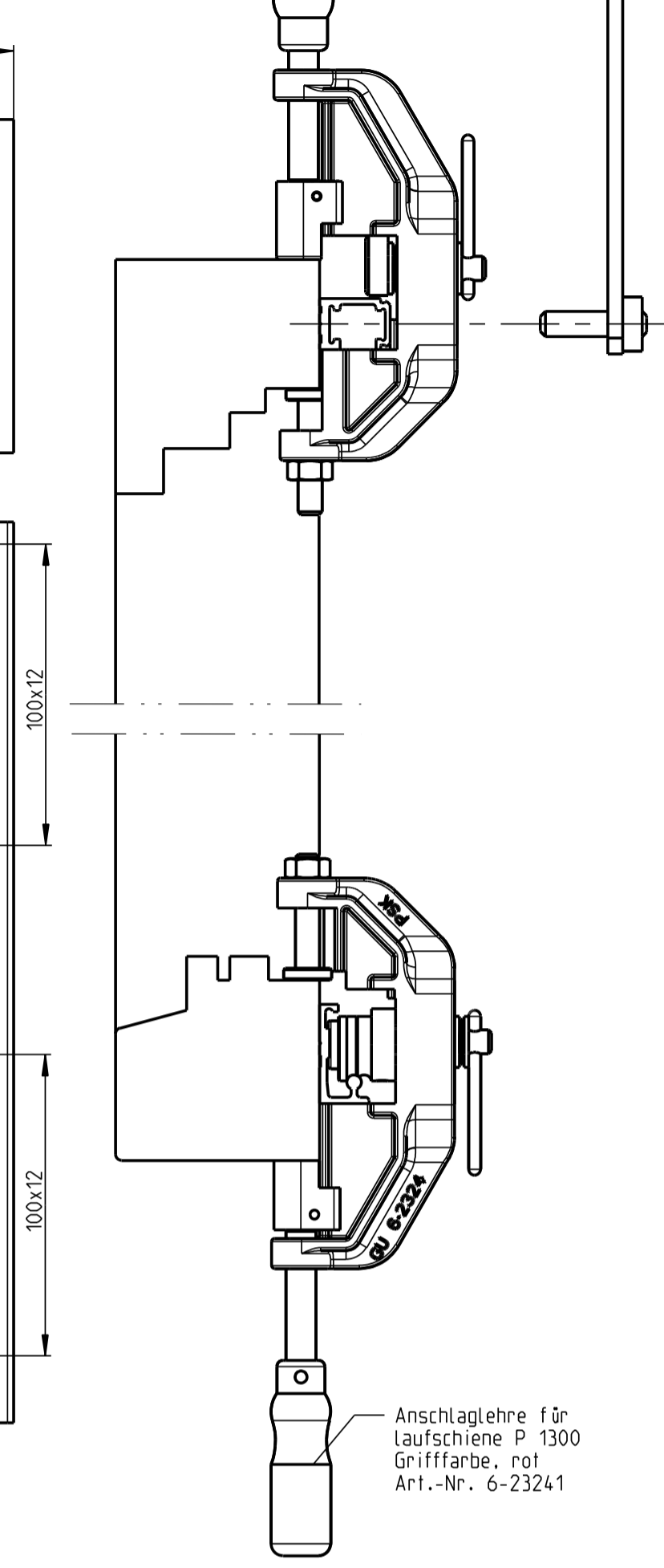
|                            |                 |       |          |       |              |                    |     |
|----------------------------|-----------------|-------|----------|-------|--------------|--------------------|-----|
| <br>                       | Release No.     | Level | released | Scale | Modification | Size               |     |
|                            | Mod. No. 023190 | Ver.  | --       | %     | 3            | 1                  |     |
| Draft                      |                 |       | 23.05.06 | Zv    | Drawing No.  | Sheet              |     |
| Replacement for O-43924-BL |                 |       |          |       |              | <b>GB-44573-BL</b> | 2/3 |



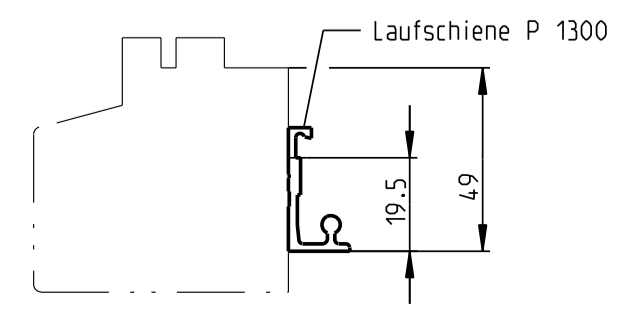
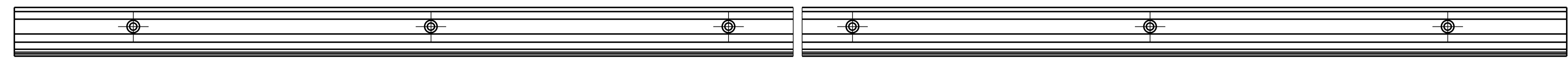
| Gr. | FFB        | Maß L | Anzahl der Schraublöcher | Teilung / Maß T | Verwendung  |
|-----|------------|-------|--------------------------|-----------------|---|
| 20  | 600-850    | 1960  | 10                       | 200             | Führungs-<br>P 1225<br>und<br>Laufschiene<br>P 1300 |
| 25  | 851-1100   | 2460  | 13                       |                 |   |
| 30  | 1101-1350  | 2960  | 15                       |                 |   |
| 35  | 1351-1600  | 3460  | 18                       |                 |   |
| 67  | Lagerlänge | 6700  | 34                       |                 |   |



Getriebe abschließbar



**Montagehinweis zu Schema D**  
Bohrlehre mit den Bohrbüchsen auf die Laufschiene stellen, am Steuer-teil anlegen und mit den Stift-en gegen Rahmenprofil ab-stützen. Anschließend die entsprechende Bohrung (Ls oder Rs) anbringen.  
Fixierstift in die Bohrung eindrücken. Der Stift dient bei Schema D als Anschlag für verschiebbares Steuer-teil.



Description  
**Parallelschiene - Kippbeslag G.U-966/150 øZ Holz Eurofalz 18x8, 20x8 und 24x8 Euronut 7/8x4**

| Release No.        | Level | released | Scale | Modification      | Size  |
|--------------------|-------|----------|-------|-------------------|-------|
| ---                | Ver.  | --       | %     | 3                 | 1     |
| Mod. No. 023190    | Draft | 16.12.08 | So    | Drawing No.       | Sheet |
| Replacement for -- |       |          |       | <b>0-44573-BL</b> | 3/3   |